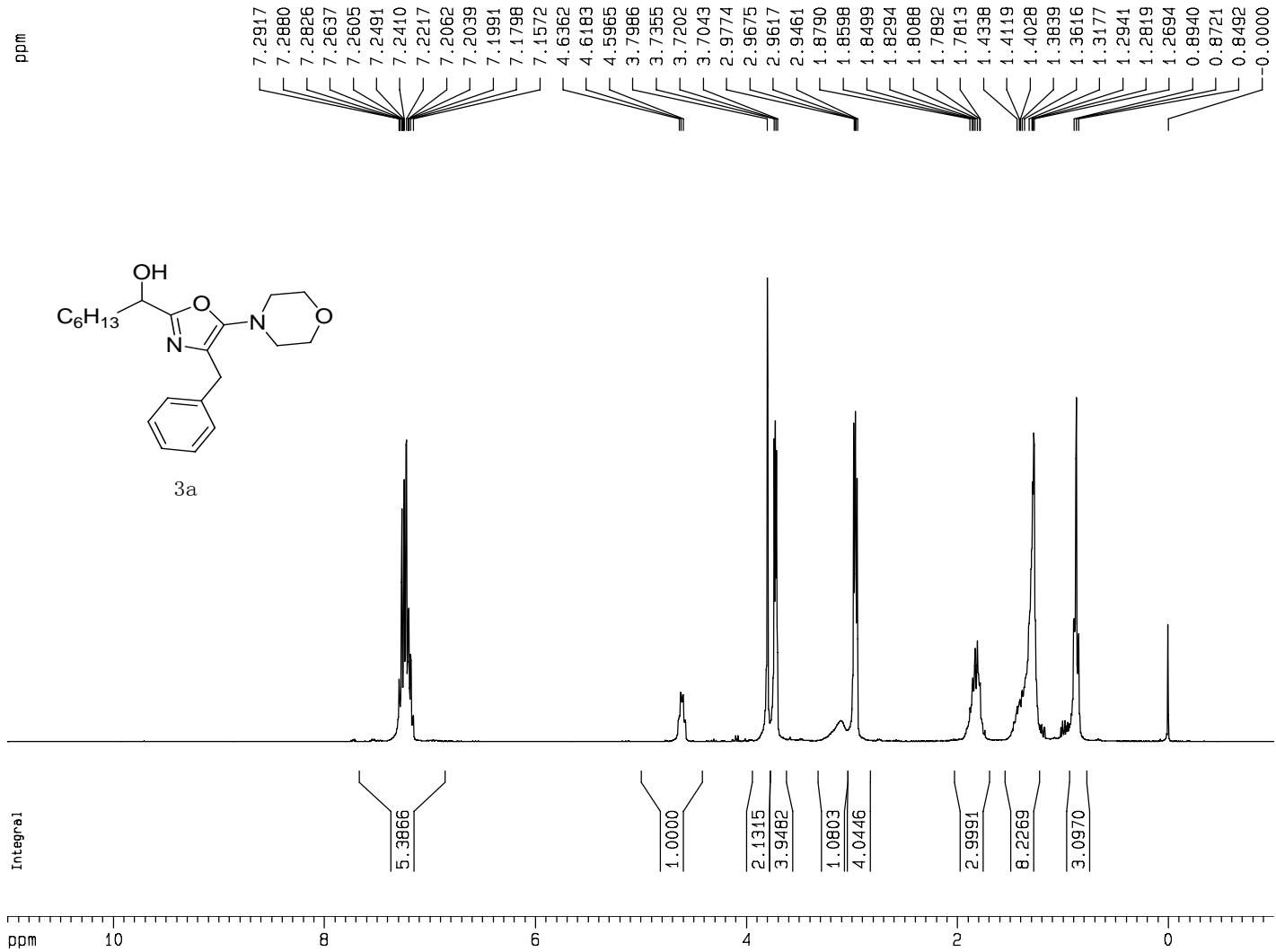


SUPPORTING INFORMATION

Title: Asymmetric Lewis Acid Catalyzed Addition of Isocyanides to Aldehydes – Synthesis of 5-Amino-2-(1-hydroxyalkyl)oxazoles

Author(s): Shixin Wang, Mei-Xiang Wang,* De-Xian Wang, Jieping Zhu*

Ref. No.: O200700340



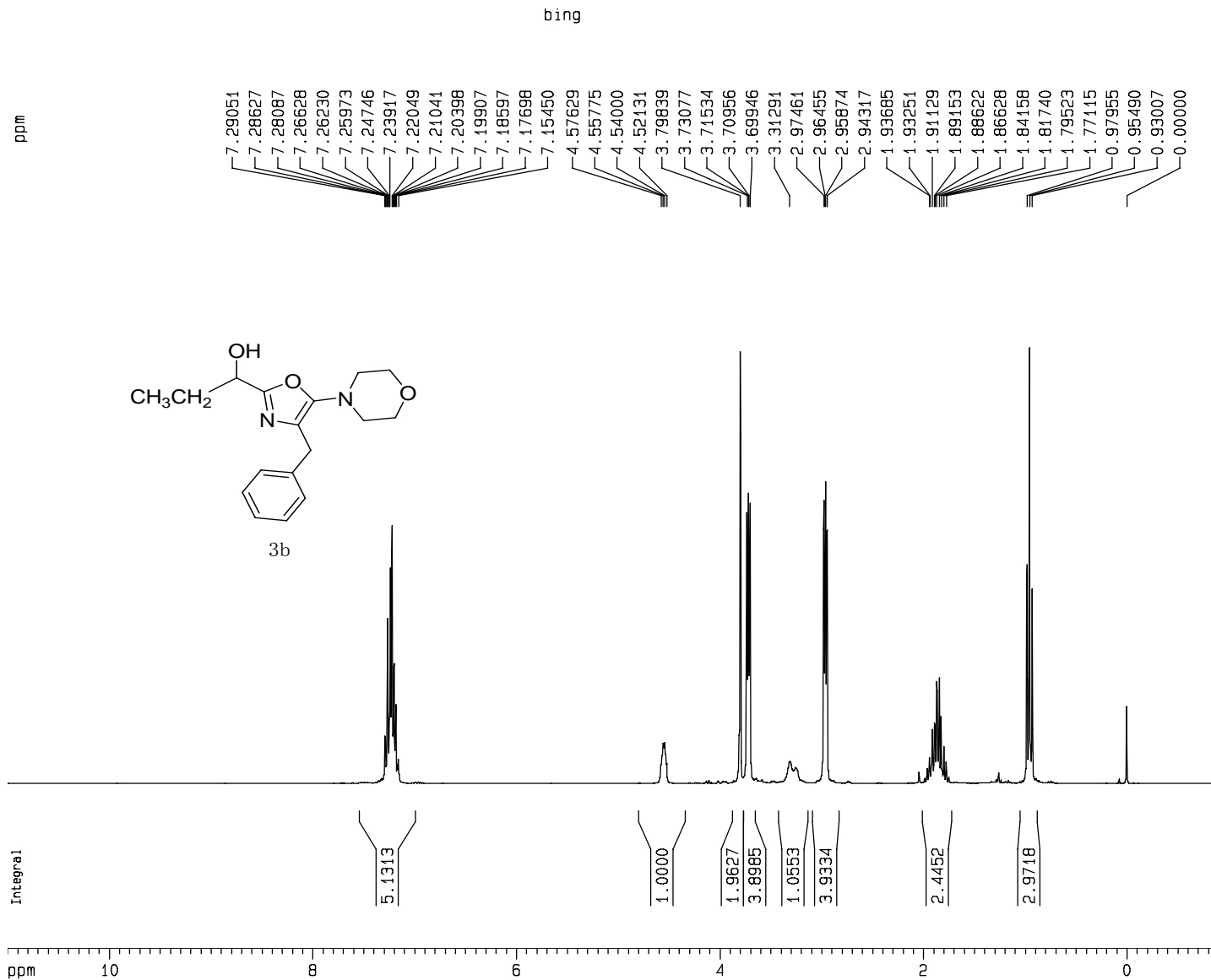
Current Data Parameters
 NAME wsx-0705-trun03
 EXPNO 10
 PROCNO 1

F2 - Acquisition Parameters
 Date_ 20050705
 Time 14.46
 INSTRUM av300
 PROBHD 5 mm DUL 13C-1
 PULPROG zg30
 TD 65536
 SOLVENT CDC13
 NS 13
 DS 2
 SWH 6172.839 Hz
 FIDRES 0.094190 Hz
 AQ 5.3084660 sec
 RG 161.3
 DW 81.000 usec
 DE 6.00 usec
 TE 673.2 K
 D1 2.00000000 sec

===== CHANNEL f1 =====
 NUC1 1H
 P1 9.30 usec
 PL1 -1.00 dB
 SF01 300.1318534 MHz

F2 - Processing parameters
 SI 32768
 SF 300.1300061 MHz
 WDW EM
 SSB 0
 LB 0.30 Hz
 GB 0
 PC 1.00

1D NMR plot parameters
 CX 22.00 cm
 CY 8.00 cm
 F1P 11.000 ppm
 F1 3301.43 Hz
 F2P -1.000 ppm
 F2 -300.13 Hz
 PPMCM 0.54545 ppm/cm
 HZCM 163.70728 Hz/cm



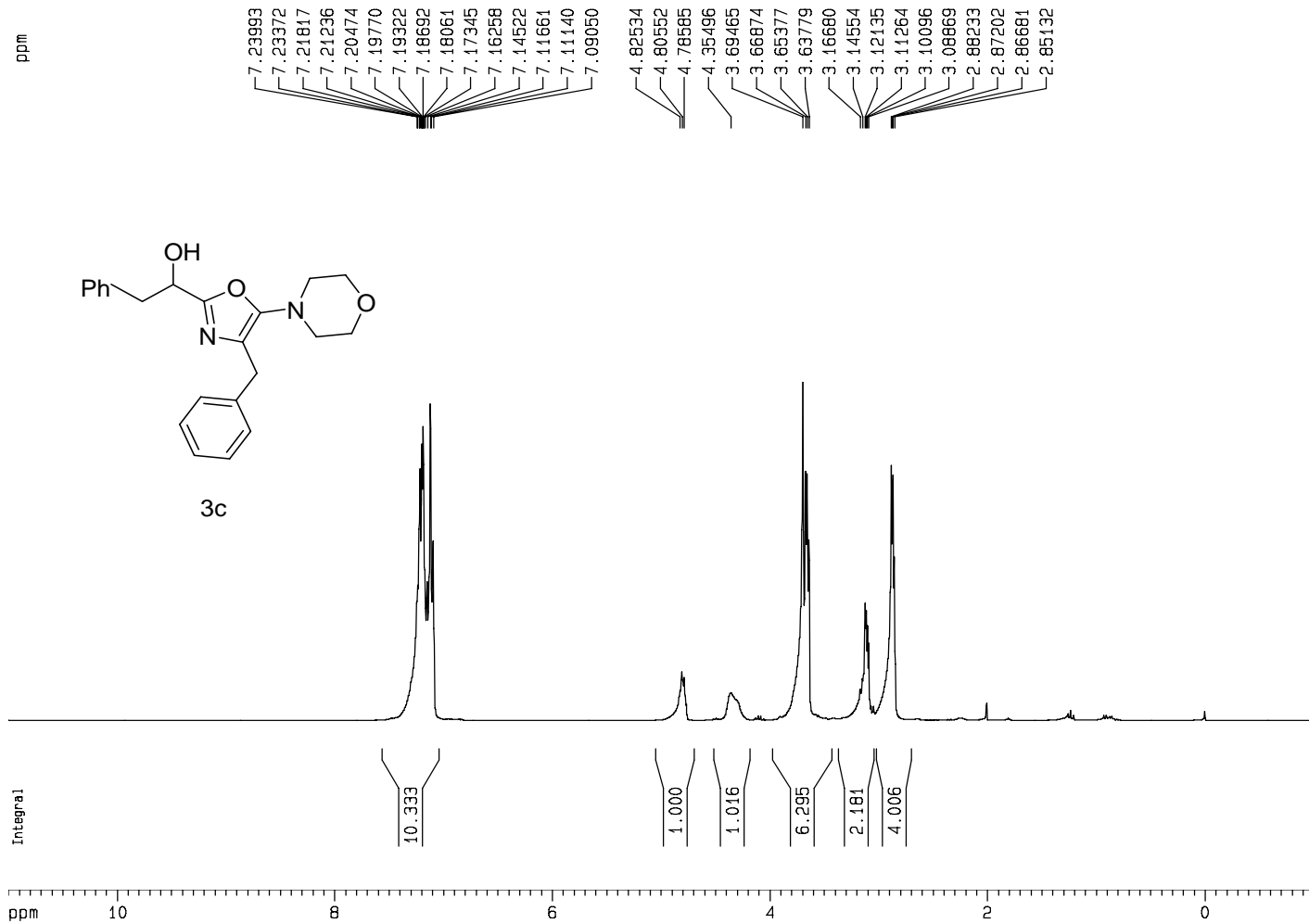
Current Data Parameters
 NAME wsx-0914-bingtr
 EXPNO 10
 PROCNO 1

F2 - Acquisition Parameters
 Date_ 20050915
 Time 14.15
 INSTRUM av300
 PROBHD 5 mm DUL 13C-1
 PULPROG zg30
 TD 65536
 SOLVENT CDC13
 NS 15
 DS 2
 SWH 6172.839 Hz
 FIDRES 0.094190 Hz
 AQ 5.3084660 sec
 RG 181
 DW 81.000 usec
 DE 6.00 usec
 TE 673.2 K
 D1 2.00000000 sec

==== CHANNEL f1 =====
 NUC1 1H
 P1 9.30 usec
 PL1 -1.00 dB
 SFO1 300.1318534 MHz

F2 - Processing parameters
 SI 32768
 SF 300.1300064 MHz
 WDW EM
 SSB 0
 LB 0.30 Hz
 GB 0
 PC 1.00

1D NMR plot parameters
 CX 22.00 cm
 CY 8.00 cm
 F1P 11.000 ppm
 F1 3301.43 Hz
 F2P -1.000 ppm
 F2 -300.13 Hz
 PPMCM 0.54545 ppm/cm
 HZCM 163.70728 Hz/cm



Current Data Parameters
 NAME wsx-1230-trun18
 EXPNO 10
 PROCNO 1

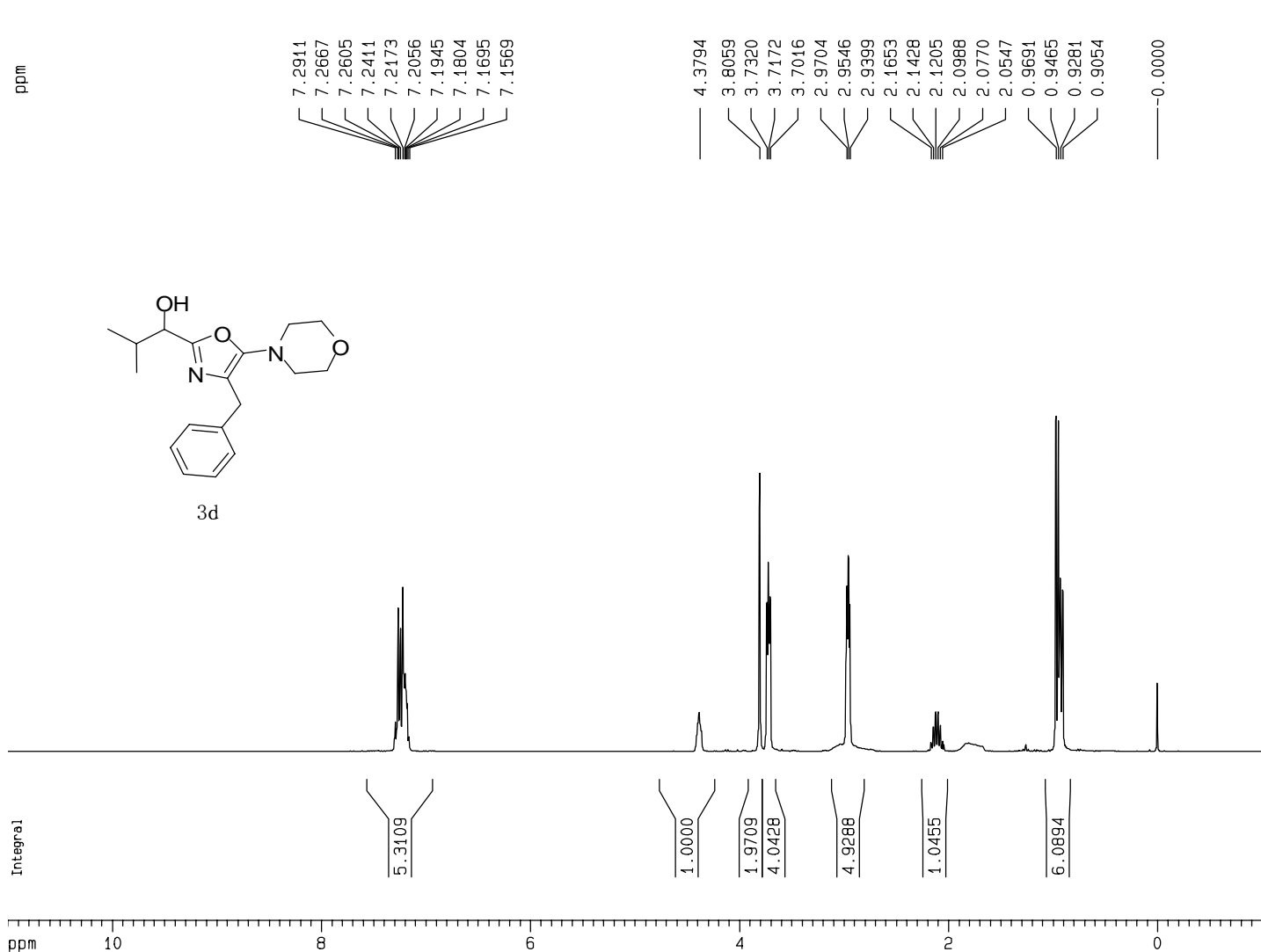
F2 - Acquisition Parameters
 Date_ 20061230
 Time 16.10
 INSTRUM av300
 PROBHD 5 mm DUL 13C-1
 PULPROG zg30
 TD 65536
 SOLVENT CDC13
 NS 16
 DS 2
 SWH 6172.839 Hz
 FIDRES 0.094190 Hz
 AQ 5.3084660 sec
 RG 50.8
 DW 81.000 usec
 DE 6.00 usec
 TE 297.7 K
 D1 2.00000000 sec

===== CHANNEL f1 =====
 NUC1 1H
 P1 9.30 usec
 PL1 -1.00 dB
 SFO1 300.1318534 MHz

F2 - Processing parameters
 SI 32768
 SF 300.1300179 MHz
 WDW EM
 SSB 0
 LB 0.35 Hz
 GB 0
 PC 1.00

1D NMR plot parameters
 CX 22.00 cm
 CY 6.00 cm
 F1P 11.000 ppm
 F1 3301.43 Hz
 F2P -1.000 ppm
 F2 -300.13 Hz
 PPMCM 0.54545 ppm/cm
 HZCM 163.70728 Hz/cm

iding



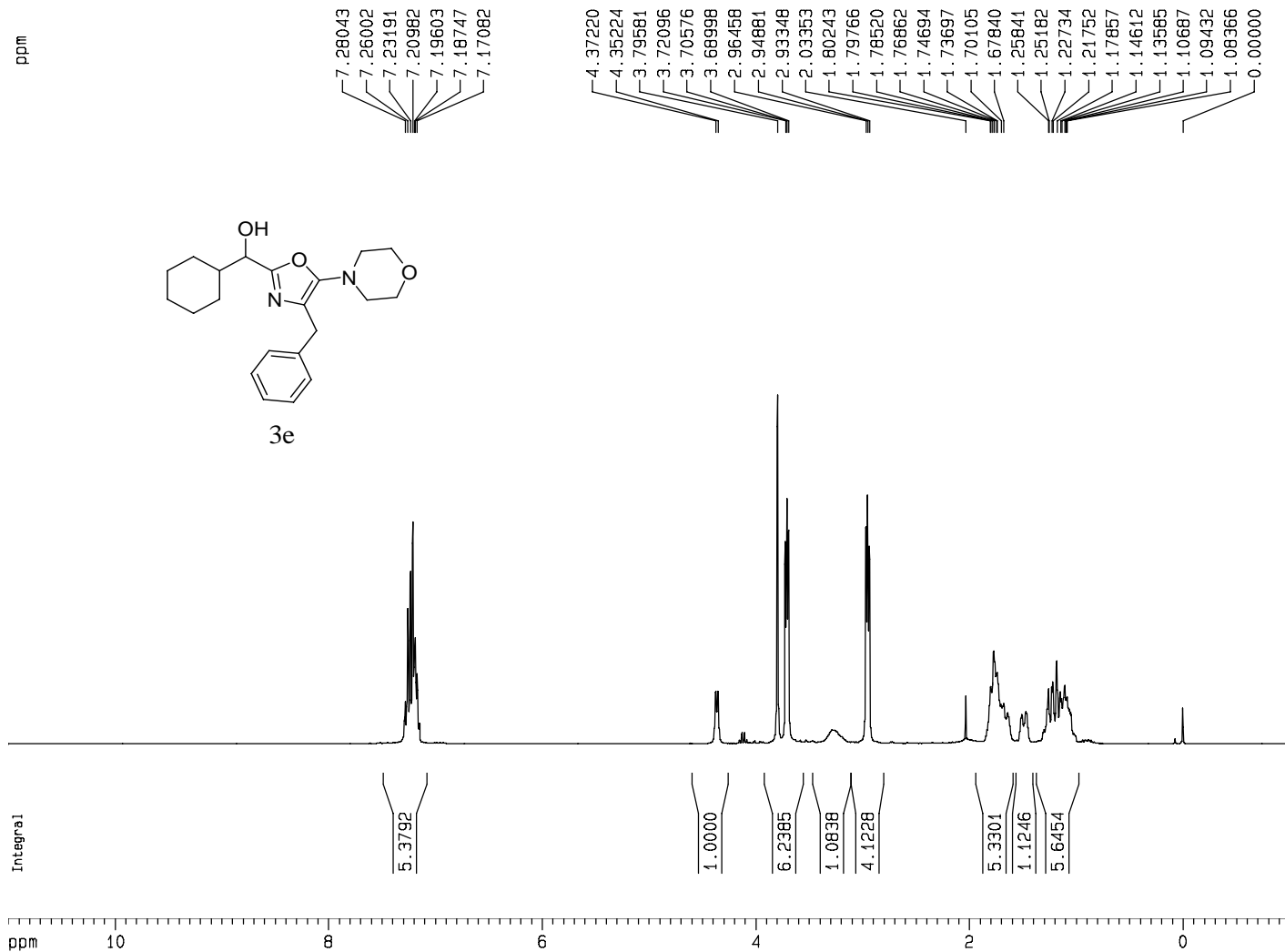
Current Data Parameters
NAME wsx-0914-iding
EXPNO 10
PROCNO 1

F2 - Acquisition Parameters
Date_ 20050915
Time 14.42
INSTRUM av300
PROBHD 5 mm DUL 13C-1
PULPROG zg30
TD 65536
SOLVENT CDC13
NS 16
DS 2
SWH 6172.839 Hz
FIDRES 0.094190 Hz
AQ 5.3084660 sec
RG 228.1
DW 81.000 usec
DE 6.00 usec
TE 673.2 K
D1 2.00000000 sec

===== CHANNEL f1 =====
NUC1 1H
P1 9.30 usec
PL1 -1.00 dB
SFO1 300.1318534 MHz

F2 - Processing parameters
SI 32768
SF 300.1300063 MHz
WDW EM
SSB 0
LB 0.30 Hz
GB 0
PC 1.00

1D NMR plot parameters
CX 22.00 cm
CY 6.00 cm
F1P 11.000 ppm
F1 3301.43 Hz
F2P -1.000 ppm
F2 -300.13 Hz
PPMCM 0.54545 ppm/cm
HZCM 163.70728 Hz/cm



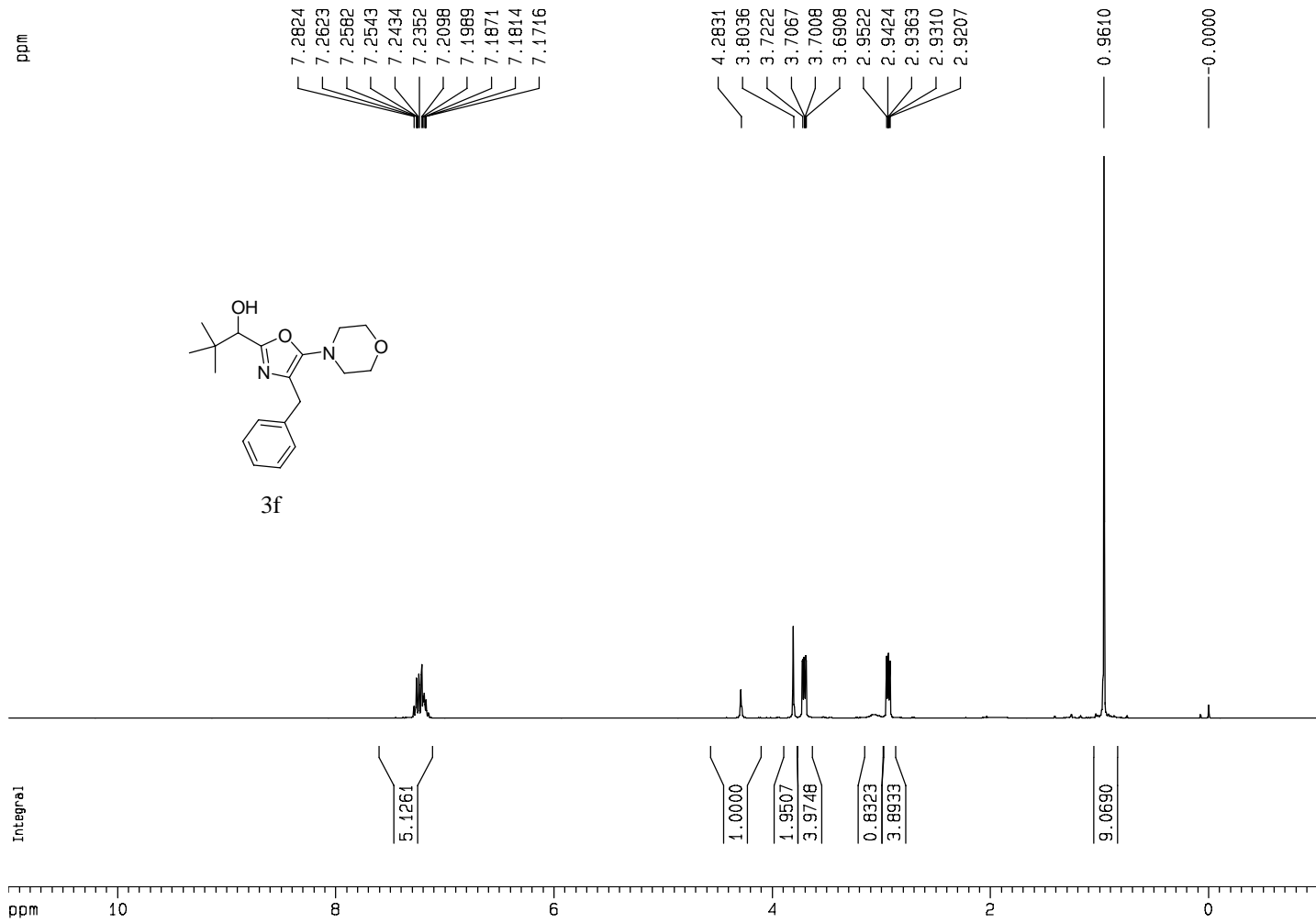
Current Data Parameters
 NAME wsx-0922-trun19
 EXPNO 10
 PROCNO 1

F2 - Acquisition Parameters
 Date_ 20060922
 Time 16.53
 INSTRUM av300
 PROBHD 5 mm DUL 13C-1
 PULPROG zg30
 TD 65536
 SOLVENT CDCl3
 NS 11
 DS 2
 SWH 6172.839 Hz
 FIDRES 0.094190 Hz
 AQ 5.3084660 sec
 RG 101.6
 DW 81.000 usec
 DE 5.00 usec
 TE 301.4 K
 D1 2.0000000 sec

==== CHANNEL f1 =====
 NUC1 1H
 P1 9.30 usec
 PL1 -1.00 dB
 SF01 300.1318534 MHz

F2 - Processing parameters
 SI 32768
 SF 300.1300060 MHz
 WDW EM
 SSB 0
 LB 0.30 Hz
 GB 0
 PC 1.00

1D NMR plot parameters
 CX 22.00 cm
 CY 5.00 cm
 F1P 11.000 ppm
 F1 3301.43 Hz
 F2P -1.000 ppm
 F2 -300.13 Hz
 PPMCM 0.54545 ppm/cm
 HZCM 163.70728 Hz/cm



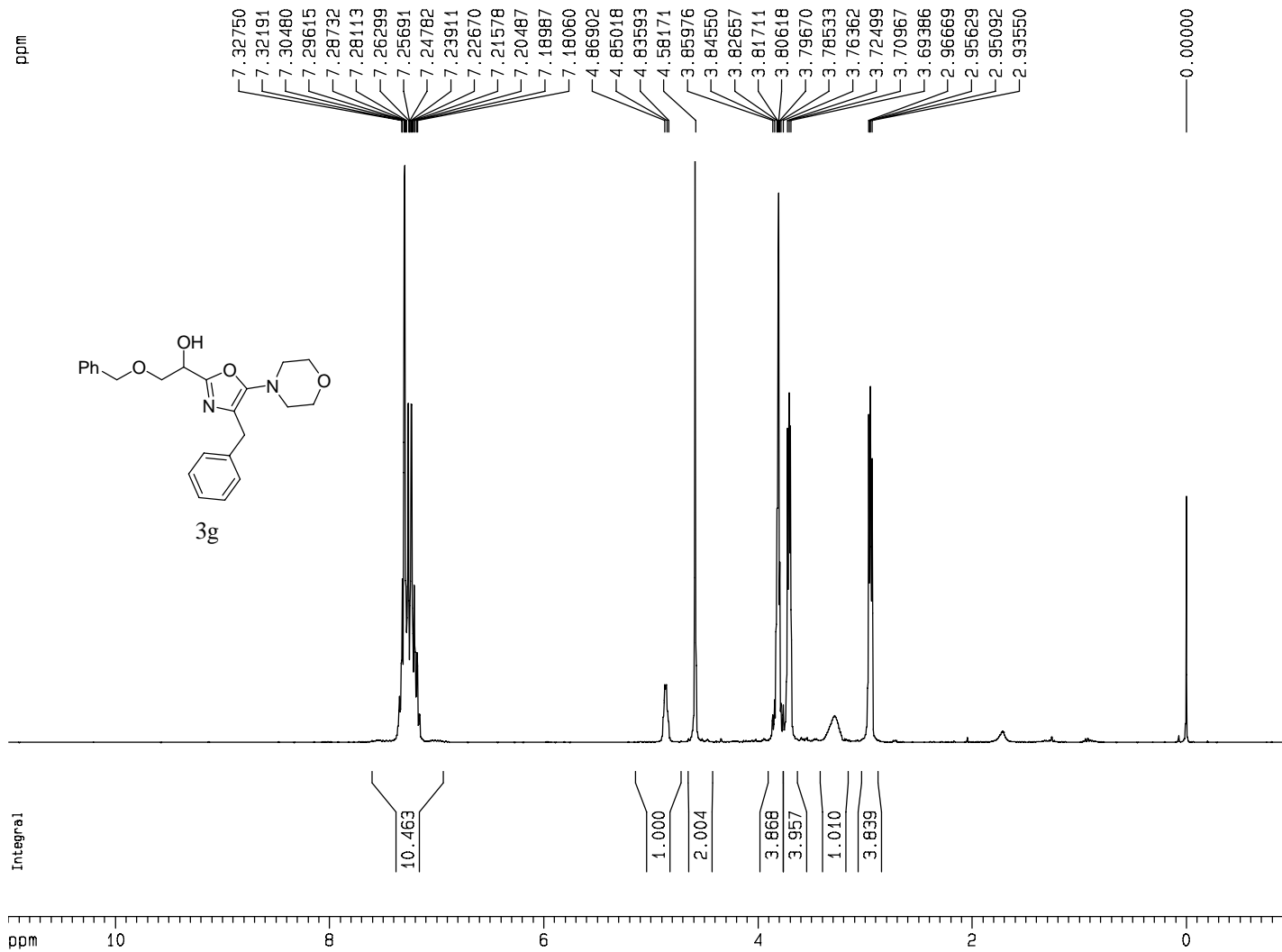
Current Data Parameters
 NAME wsx-0911-01
 EXPNO 10
 PROCNO 1

F2 - Acquisition Parameters
 Date_ 20060911
 Time 16.27
 INSTRUM av300
 PROBHD 5 mm DUL 13C-1
 PULPROG zg30
 TD 65536
 SOLVENT CDC13
 NS 16
 DS 2
 SWH 6172.839 Hz
 FIDRES 0.094190 Hz
 AQ 5.3084660 sec
 RG 128
 DW 81.000 usec
 DE 6.00 usec
 TE 302.8 K
 D1 2.00000000 sec

===== CHANNEL f1 =====
 NUC1 1H
 P1 9.30 usec
 PL1 -1.00 dB
 SFO1 300.1318534 MHz

F2 - Processing parameters
 SI 32768
 SF 300.1300069 MHz
 WDW EM
 SSB 0
 LB 0.30 Hz
 GB 0
 PC 1.00

1D NMR plot parameters
 CX 22.00 cm
 CY 10.00 cm
 F1P 11.000 ppm
 F1 3301.43 Hz
 F2P -1.000 ppm
 F2 -300.13 Hz
 PPMCM 0.54545 ppm/cm
 HZCM 163.70728 Hz/cm



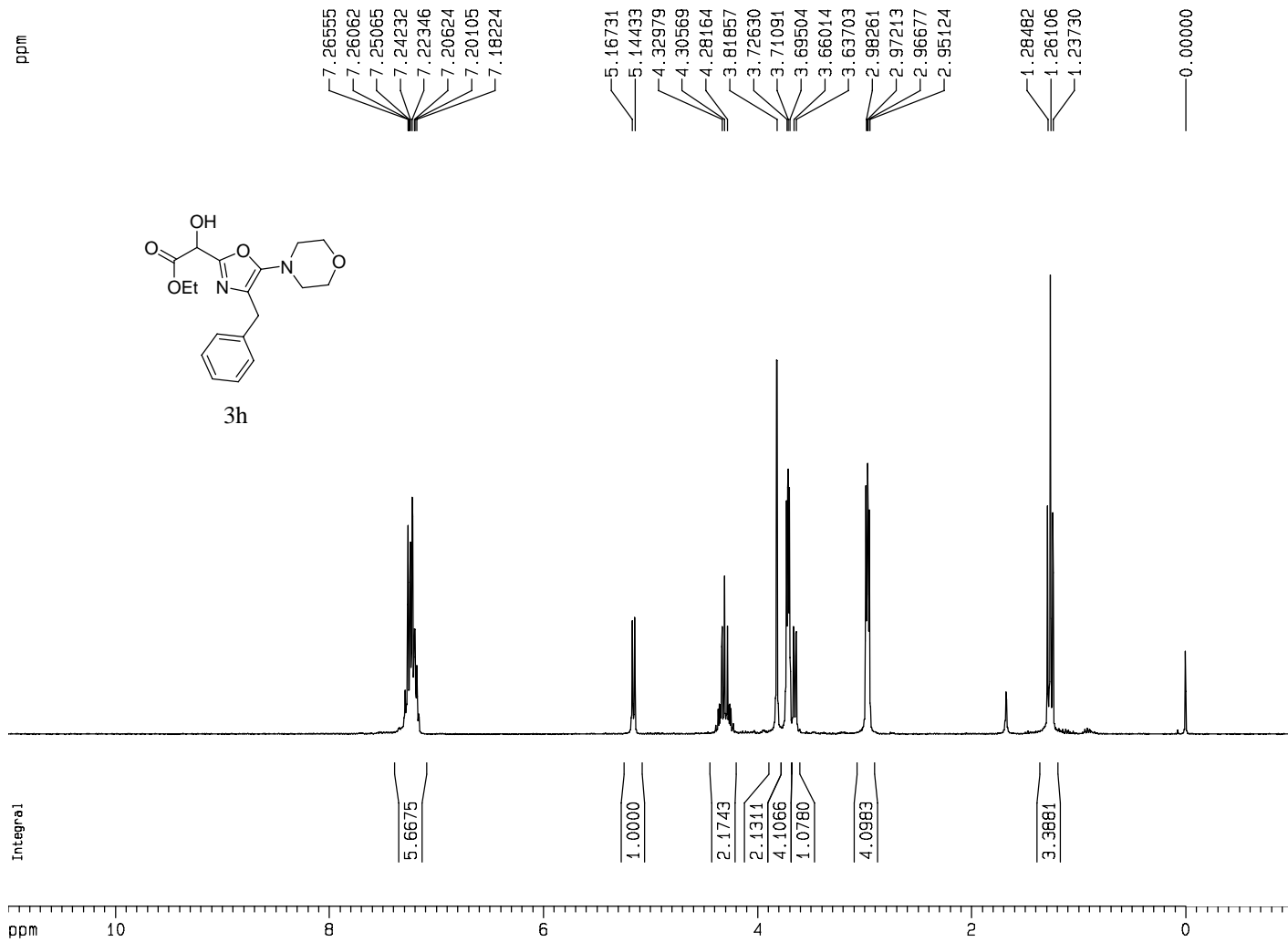
Current Data Parameters
 NAME wsx-0403-trun
 EXPNO 10
 PROCNO 1

F2 - Acquisition Parameters
 Date_ 20060404
 Time 8.39
 INSTRUM av300
 PROBHD 5 mm DUL 13C-1
 PULPROG zg30
 TD 65536
 SOLVENT CDC13
 NS 16
 DS 2
 SWH 6172.839 Hz
 FIDRES 0.094190 Hz
 AQ 5.3084660 sec
 RG 181
 DW 81.000 usec
 DE 6.00 usec
 TE 294.7 K
 D1 2.00000000 sec

==== CHANNEL f1 =====
 NUC1 1H
 P1 9.30 usec
 PL1 -1.00 dB
 SFO1 300.1318534 MHz

F2 - Processing parameters
 SI 32768
 SF 300.1300072 MHz
 WDW EM
 SSB 0
 LB 0.30 Hz
 GB 0
 PC 1.00

1D NMR plot parameters
 CX 22.00 cm
 CY 10.00 cm
 F1P 11.000 ppm
 F1 3301.43 Hz
 F2P -1.000 ppm
 F2 -300.13 Hz
 PPMCM 0.54545 ppm/cm
 HZCM 163.70728 Hz/cm



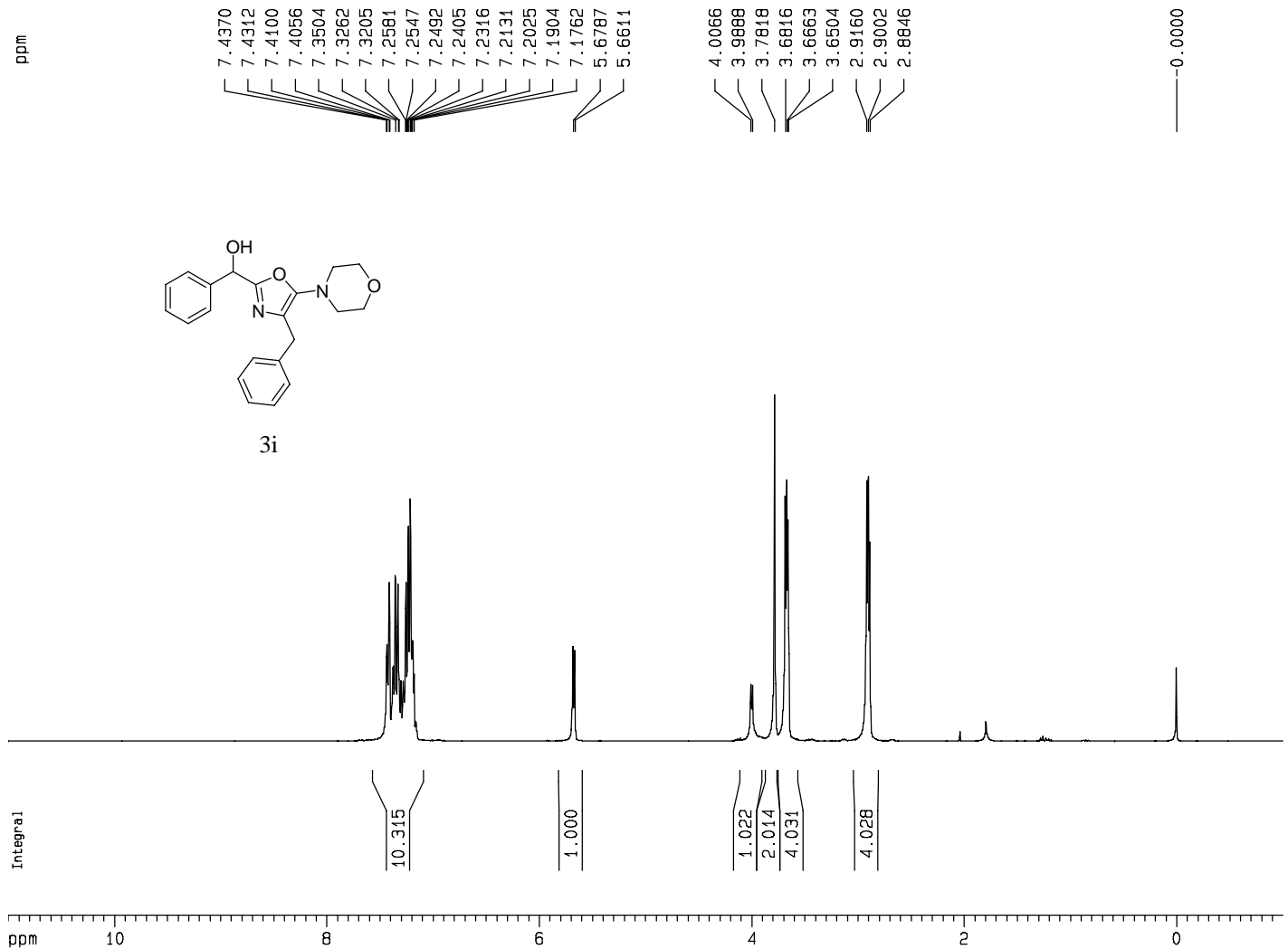
Current Data Parameters
 NAME yt-20Snc12
 EXPNO 10
 PROCNO 1

F2 - Acquisition Parameters
 Date_ 20060320
 Time 16.05
 INSTRUM av300
 PROBHD 5 mm DUL 13C-1
 PULPROG zg30
 TD 65536
 SOLVENT CDC13
 NS 5
 DS 2
 SWH 6172.839 Hz
 FIDRES 0.094190 Hz
 AQ 5.3084660 sec
 RG 322.5
 DW 81.000 usec
 DE 6.00 usec
 TE 299.9 K
 D1 2.00000000 sec

===== CHANNEL f1 =====
 NUC1 1H
 P1 9.30 usec
 PL1 -1.00 dB
 SFO1 300.1318534 MHz

F2 - Processing parameters
 SI 32768
 SF 300.1300061 MHz
 WDW EM
 SSB 0
 LB 0.30 Hz
 GB 0
 PC 1.00

1D NMR plot parameters
 CX 22.00 cm
 CY 8.00 cm
 F1P 11.000 ppm
 F1 3301.43 Hz
 F2P -1.000 ppm
 F2 -300.13 Hz
 PPMCM 0.54545 ppm/cm
 HZCM 163.70728 Hz/cm



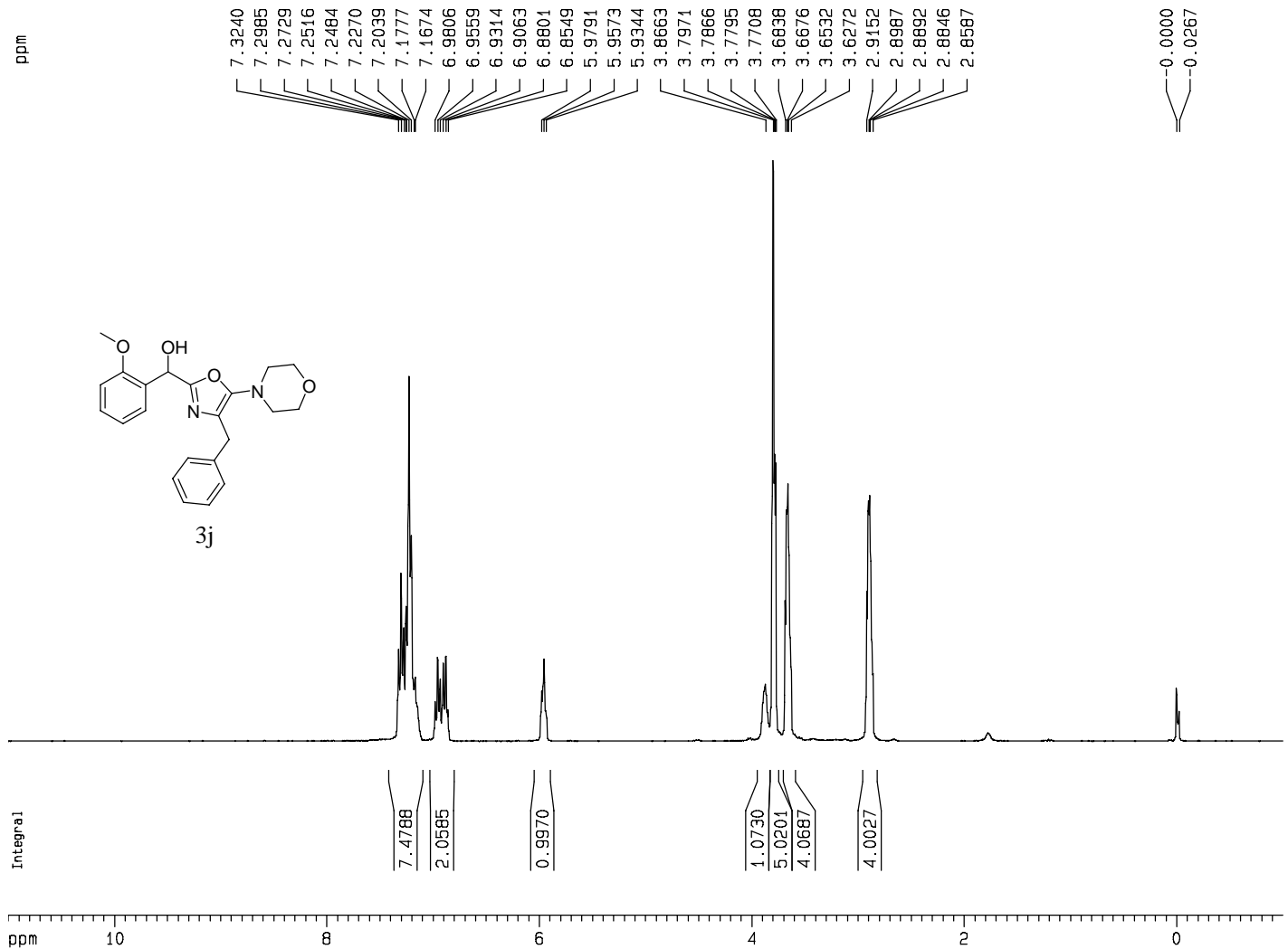
Current Data Parameters
 NAME wsx-0428-trun7
 EXPNO 20
 PROCNO 1

F2 - Acquisition Parameters
 Date_ 20060428
 Time 15.53
 INSTRUM av300
 PROBHD 5 mm DUL 13C-1
 PULPROG zg30
 TD 65536
 SOLVENT CDC13
 NS 8
 DS 2
 SWH 6172.839 Hz
 FIDRES 0.094190 Hz
 AQ 5.3084660 sec
 RG 181
 DW 81.000 usec
 DE 6.00 usec
 TE 299.8 K
 D1 2.0000000 sec

==== CHANNEL f1 =====
 NUC1 1H
 P1 9.30 usec
 PL1 -1.00 dB
 SF01 300.1318534 MHz

F2 - Processing parameters
 SI 32768
 SF 300.130094 MHz
 WDW EM
 SSB 0
 LB 0.30 Hz
 GB 0
 PC 1.00

1D NMR plot parameters
 CX 22.00 cm
 CY 6.00 cm
 F1P 11.000 ppm
 F1 3301.43 Hz
 F2P -1.000 ppm
 F2 -300.13 Hz
 PPMCM 0.54545 ppm/cm
 HZCM 163.70728 Hz/cm



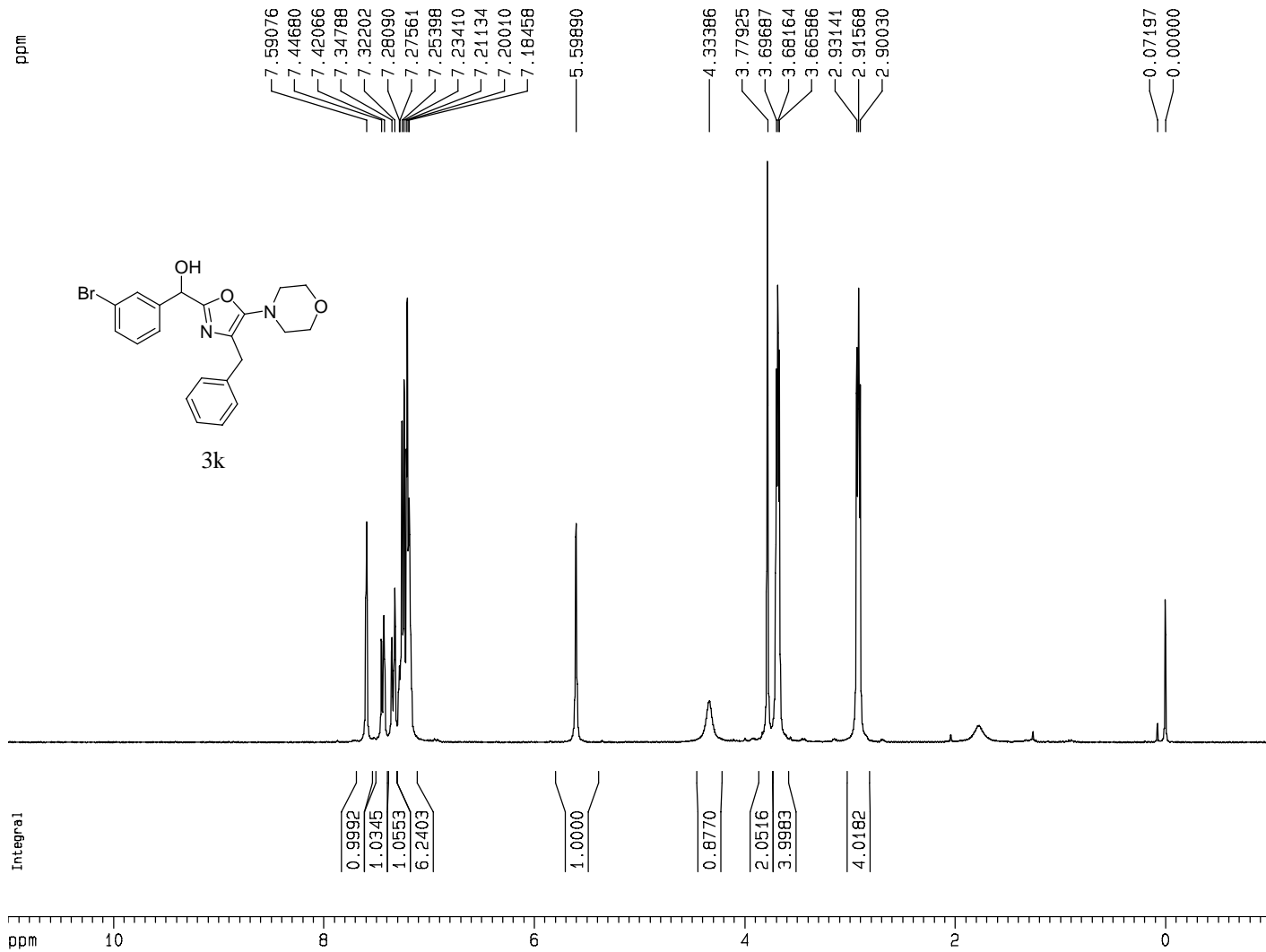
Current Data Parameters
 NAME wsx-0414-trun07
 EXPNO 10
 PROCNO 1

F2 - Acquisition Parameters
 Date_ 20060414
 Time 8.19
 INSTRUM av300
 PROBHD 5 mm DUL 13C-1
 PULPROG zg30
 TD 65536
 SOLVENT CDC13
 NS 8
 DS 2
 SWH 6172.839 Hz
 FIDRES 0.094190 Hz
 AQ 5.3084660 sec
 RG 181
 DW 81.000 usec
 DE 6.00 usec
 TE 297.4 K
 D1 2.0000000 sec

==== CHANNEL f1 =====
 NUC1 1H
 P1 9.30 usec
 PL1 -1.00 dB
 SF01 300.1318534 MHz

F2 - Processing parameters
 SI 32768
 SF 300.1300091 MHz
 WDW EM
 SSB 0
 LB 0.30 Hz
 GB 0
 PC 1.00

1D NMR plot parameters
 CX 22.00 cm
 CY 10.00 cm
 F1P 11.000 ppm
 F1 3301.43 Hz
 F2P -1.000 ppm
 F2 -300.13 Hz
 PPMCM 0.54545 ppm/cm
 HZCM 163.70728 Hz/cm



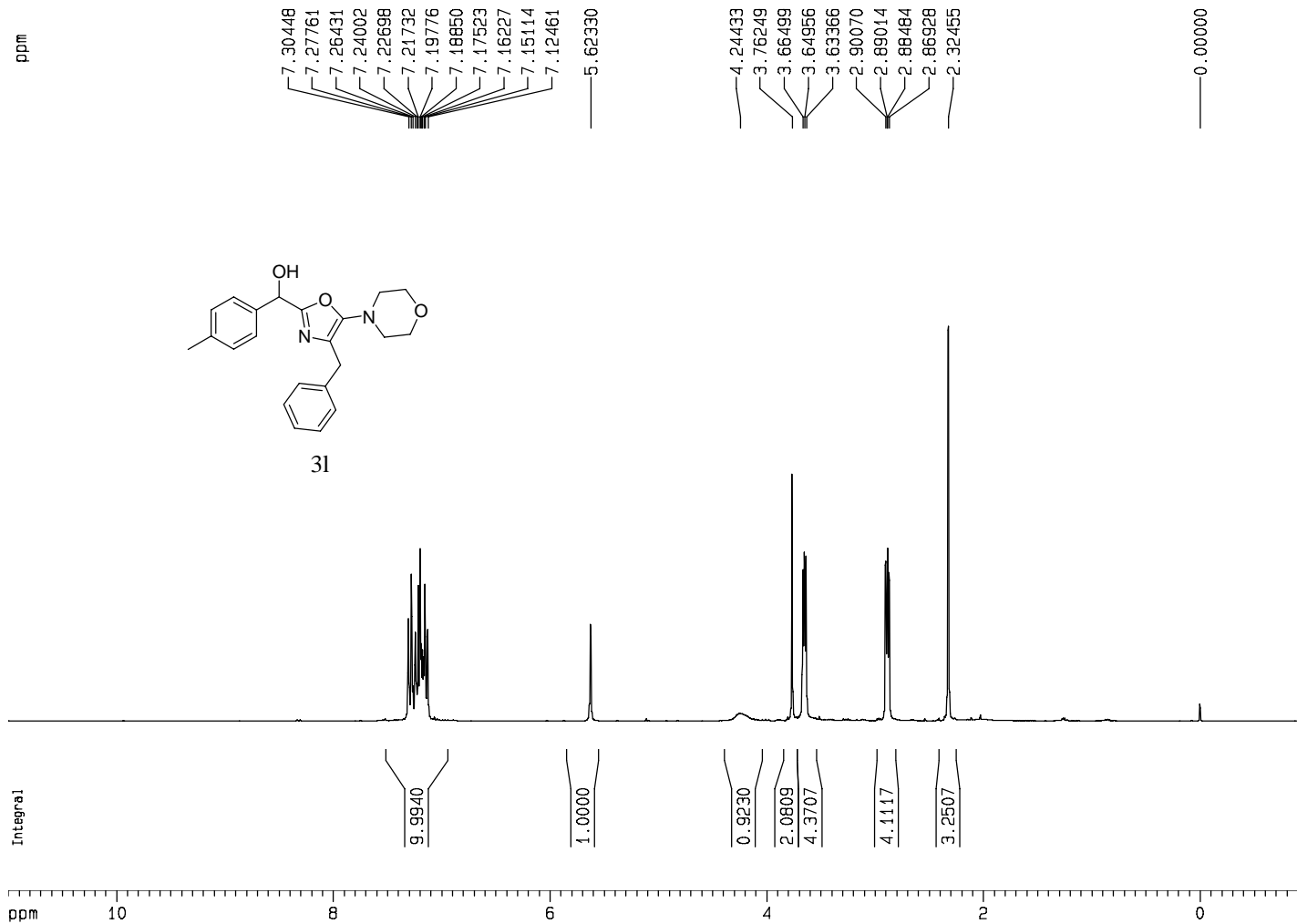
Current Data Parameters
 NAME wsx-0726-jianxi
 EXPNO 10
 PROCNO 1

F2 - Acquisition Parameters
 Date_ 20060726
 Time 8.43
 INSTRUM av300
 PROBHD 5 mm DUL 13C-1
 PULPROG zg30
 TD 65536
 SOLVENT CDCl3
 NS 7
 DS 2
 SWH 6172.839 Hz
 FIDRES 0.094190 Hz
 AQ 5.3084660 sec
 RG 256
 DW 81.000 usec
 DE 6.00 usec
 TE 299.6 K
 D1 2.0000000 sec

==== CHANNEL f1 =====
 NUC1 1H
 P1 9.30 usec
 PL1 -1.00 dB
 SF01 300.1318534 MHz

F2 - Processing parameters
 SI 32768
 SF 300.1300081 MHz
 WDW EM
 SSB 0
 LB 0.30 Hz
 GB 0
 PC 1.00

1D NMR plot parameters
 CX 22.00 cm
 CY 10.00 cm
 F1P 11.000 ppm
 F1 3301.43 Hz
 F2P -1.000 ppm
 F2 -300.13 Hz
 PPMCM 0.54545 ppm/cm
 HZCM 163.70728 Hz/cm



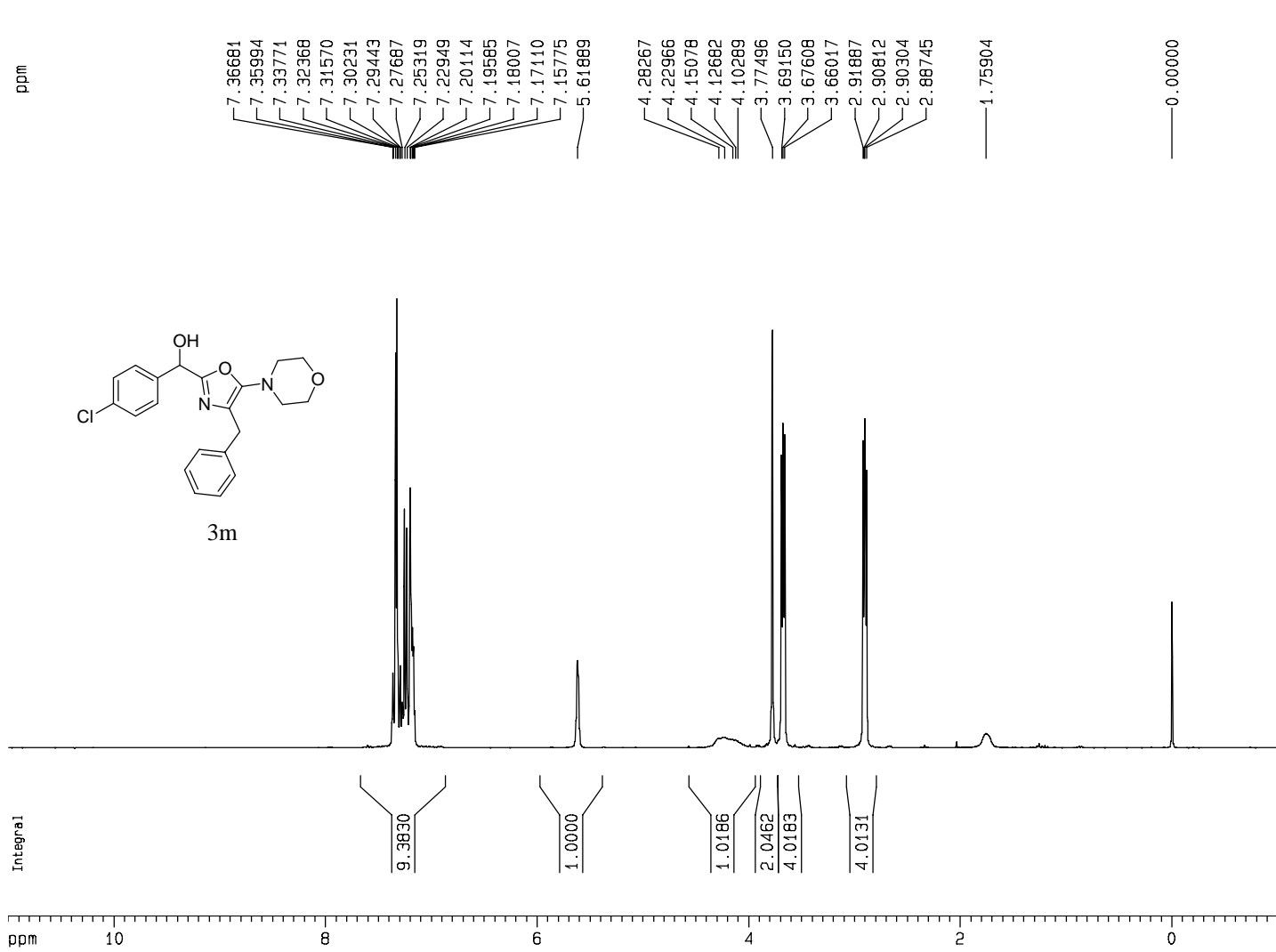
Current Data Parameters
 NAME wsx-0706-02
 EXPNO 10
 PROCNO 1

F2 - Acquisition Parameters
 Date_ 20060706
 Time 8.35
 INSTRUM av300
 PROBHD 5 mm DUL 13C-1
 PULPROG zg30
 TD 65536
 SOLVENT CDCl3
 NS 11
 DS 2
 SWH 6172.839 Hz
 FIDRES 0.094190 Hz
 AQ 5.3084660 sec
 RG 101.6
 DW 81.000 usec
 DE 6.00 usec
 TE 299.9 K
 D1 2.00000000 sec

===== CHANNEL f1 =====
 NUC1 1H
 P1 9.30 usec
 PL1 -1.00 dB
 SFO1 300.1318534 MHz

F2 - Processing parameters
 SI 32768
 SF 300.1300127 MHz
 WDW EM
 SSB 0
 LB 0.30 Hz
 GB 0
 PC 1.00

1D NMR plot parameters
 CX 22.00 cm
 CY 7.00 cm
 F1P 11.000 ppm
 F1 3301.43 Hz
 F2P -1.000 ppm
 F2 -300.13 Hz
 PPMCM 0.54545 ppm/cm
 HZCM 163.70728 Hz/cm



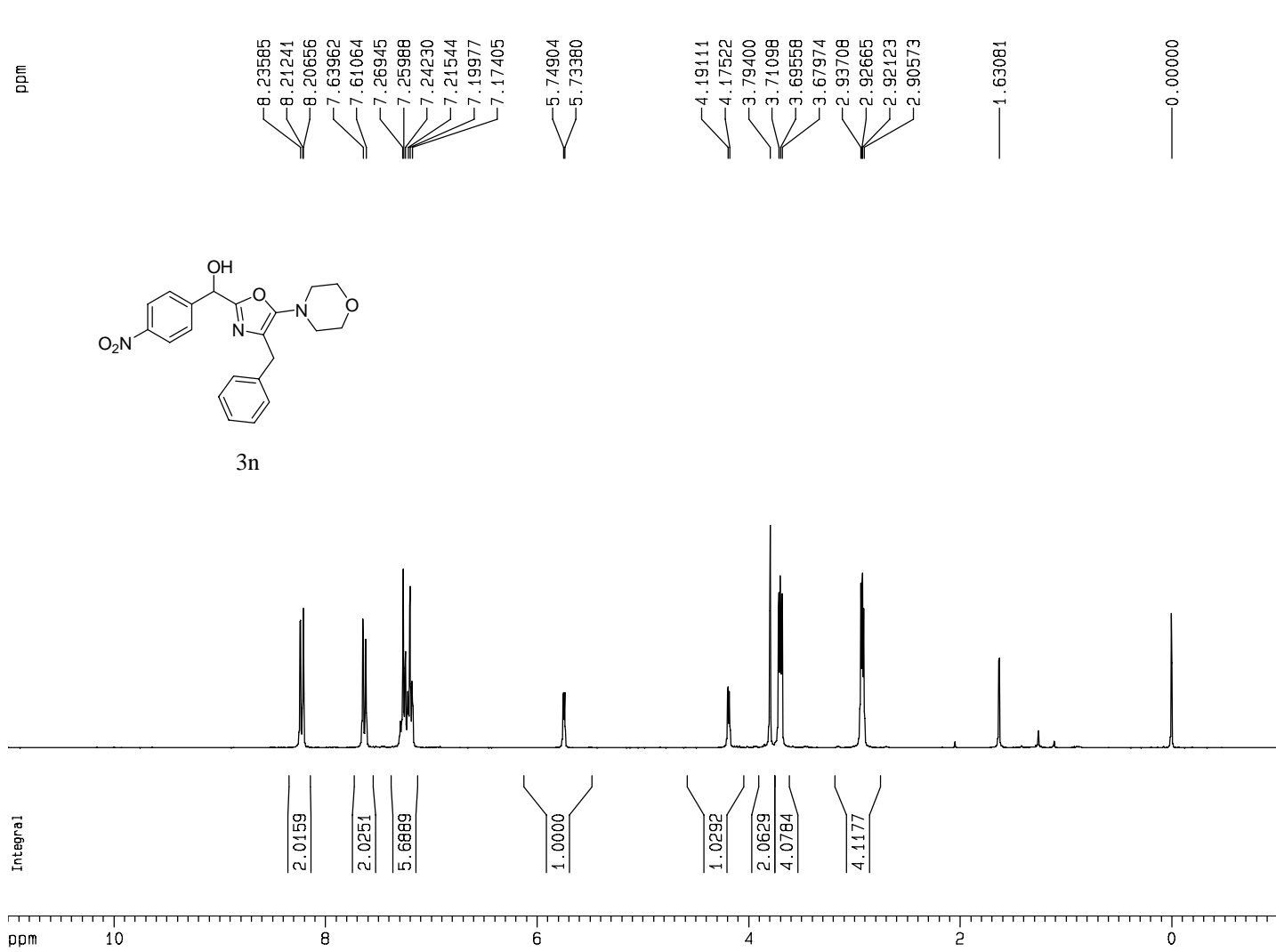
Current Data Parameters
 NAME wsx-0710-trun
 EXPNO 10
 PROCNO 1

F2 - Acquisition Parameters
 Date_ 20060710
 Time 22.29
 INSTRUM av300
 PROBHD 5 mm DUL 13C-1
 PULPROG zg30
 TD 65536
 SOLVENT CDC13
 NS 10
 DS 2
 SWH 6172.839 Hz
 FIDRES 0.094190 Hz
 AQ 5.3084660 sec
 RG 203.2
 DW 81.000 usec
 DE 6.00 usec
 TE 300.8 K
 D1 2.00000000 sec

===== CHANNEL f1 =====
 NUC1 1H
 P1 9.30 usec
 PL1 -1.00 dB
 SFO1 300.1318534 MHz

F2 - Processing parameters
 SI 32768
 SF 300.1300084 MHz
 WDW EM
 SSB 0
 LB 0.30 Hz
 GB 0
 PC 1.00

1D NMR plot parameters
 CX 22.00 cm
 CY 8.00 cm
 F1P 11.000 ppm
 F1 3301.43 Hz
 F2P -1.000 ppm
 F2 -300.13 Hz
 PPMCM 0.54545 ppm/cm
 HZCM 163.70728 Hz/cm



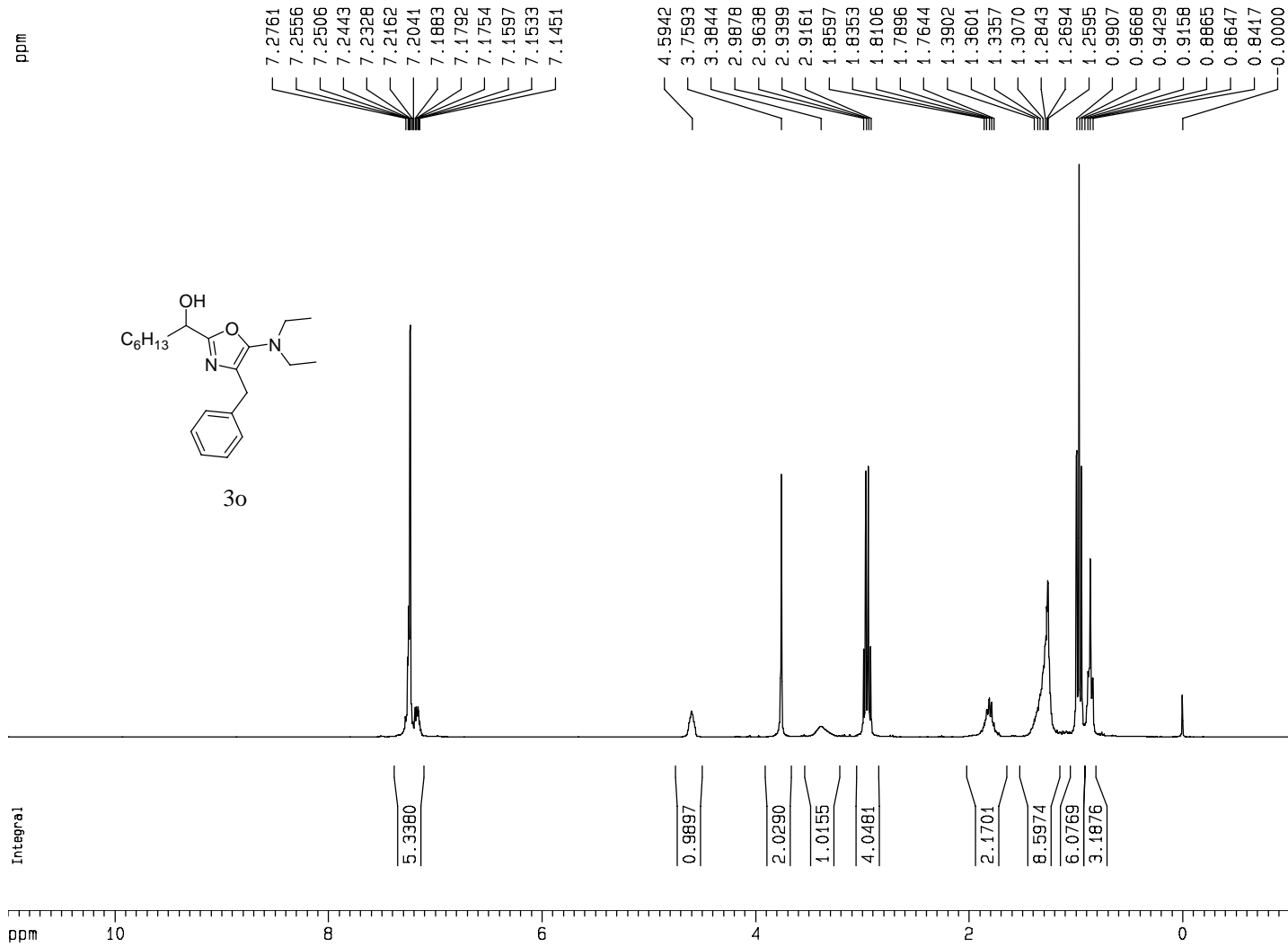
Current Data Parameters
 NAME wsx-0303-run06
 EXPNO 10
 PROCNO 1

F2 - Acquisition Parameters
 Date_ 20060303
 Time 16.07
 INSTRUM av300
 PROBHD 5 mm DUL 13C-1
 PULPROG zg30
 TD 65536
 SOLVENT CDC13
 NS 16
 DS 2
 SWH 6172.839 Hz
 FIDRES 0.094190 Hz
 AQ 5.3084660 sec
 RG 362
 DW 81.000 usec
 DE 6.00 usec
 TE 297.3 K
 D1 2.00000000 sec

===== CHANNEL f1 =====
 NUC1 1H
 P1 9.30 usec
 PL1 -1.00 dB
 SFO1 300.1318534 MHz

F2 - Processing parameters
 SI 32768
 SF 300.1300063 MHz
 WDW EM
 SSB 0
 LB 0.30 Hz
 GB 0
 PC 1.00

1D NMR plot parameters
 CX 22.00 cm
 CY 4.00 cm
 F1P 11.000 ppm
 F1 3301.43 Hz
 F2P -1.000 ppm
 F2 -300.13 Hz
 PPMCM 0.54545 ppm/cm
 HZCM 163.70728 Hz/cm



Current Data Parameters
 NAME wsx-0428-trun11
 EXPNO 10
 PROCNO 1

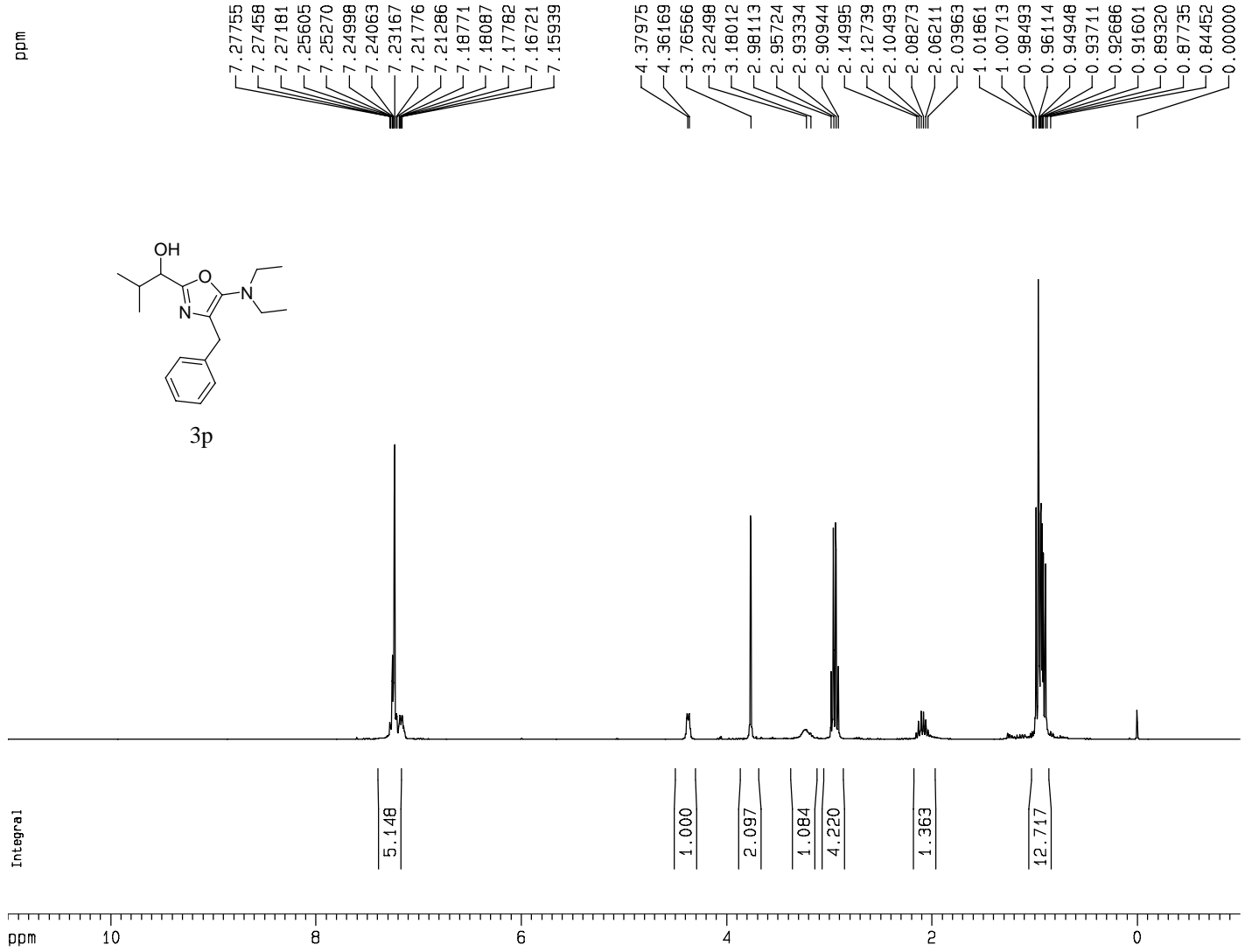
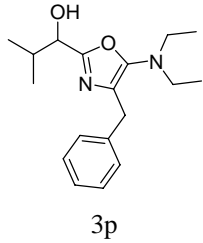
F2 - Acquisition Parameters
 Date_ 20060428
 Time 16.15
 INSTRUM av300
 PROBHD 5 mm DUL 13C-1
 PULPROG zg30
 TD 65536
 SOLVENT CDC13
 NS 16
 DS 2
 SWH 6172.839 Hz
 FIDRES 0.094190 Hz
 AQ 5.3084660 sec
 RG 114
 DW 81.000 usec
 DE 6.00 usec
 TE 299.9 K
 D1 2.00000000 sec

===== CHANNEL f1 =====
 NUC1 1H
 P1 9.30 usec
 PL1 -1.00 dB
 SFO1 300.1318534 MHz

F2 - Processing parameters
 SI 32768
 SF 300.1300075 MHz
 WDW EM
 SSB 0
 LB 0.30 Hz
 GB 0
 PC 1.00

1D NMR plot parameters
 CX 22.00 cm
 CY 10.00 cm
 F1P 11.000 ppm
 F1 3301.43 Hz
 F2P -1.000 ppm
 F2 -300.13 Hz
 PPMCM 0.54545 ppm/cm
 HZCM 163.70728 Hz/cm

ppm



Current Data Parameters

NAME wsx-0919-01
 EXPNO 10
 PROCNO 1

F2 - Acquisition Parameters

Date_ 20060920
 Time 16.32
 INSTRUM av300
 PROBHD 5 mm DUL 13C-1
 PULPROG zg30
 TD 65536
 SOLVENT CDCl3
 NS 12
 DS 2
 SWH 6172.839 Hz
 FIDRES 0.094190 Hz
 AQ 5.3084660 sec
 RG 114
 DW 81.000 usec
 DE 6.00 usec
 TE 301.3 K
 D1 2.0000000 sec

===== CHANNEL f1 =====

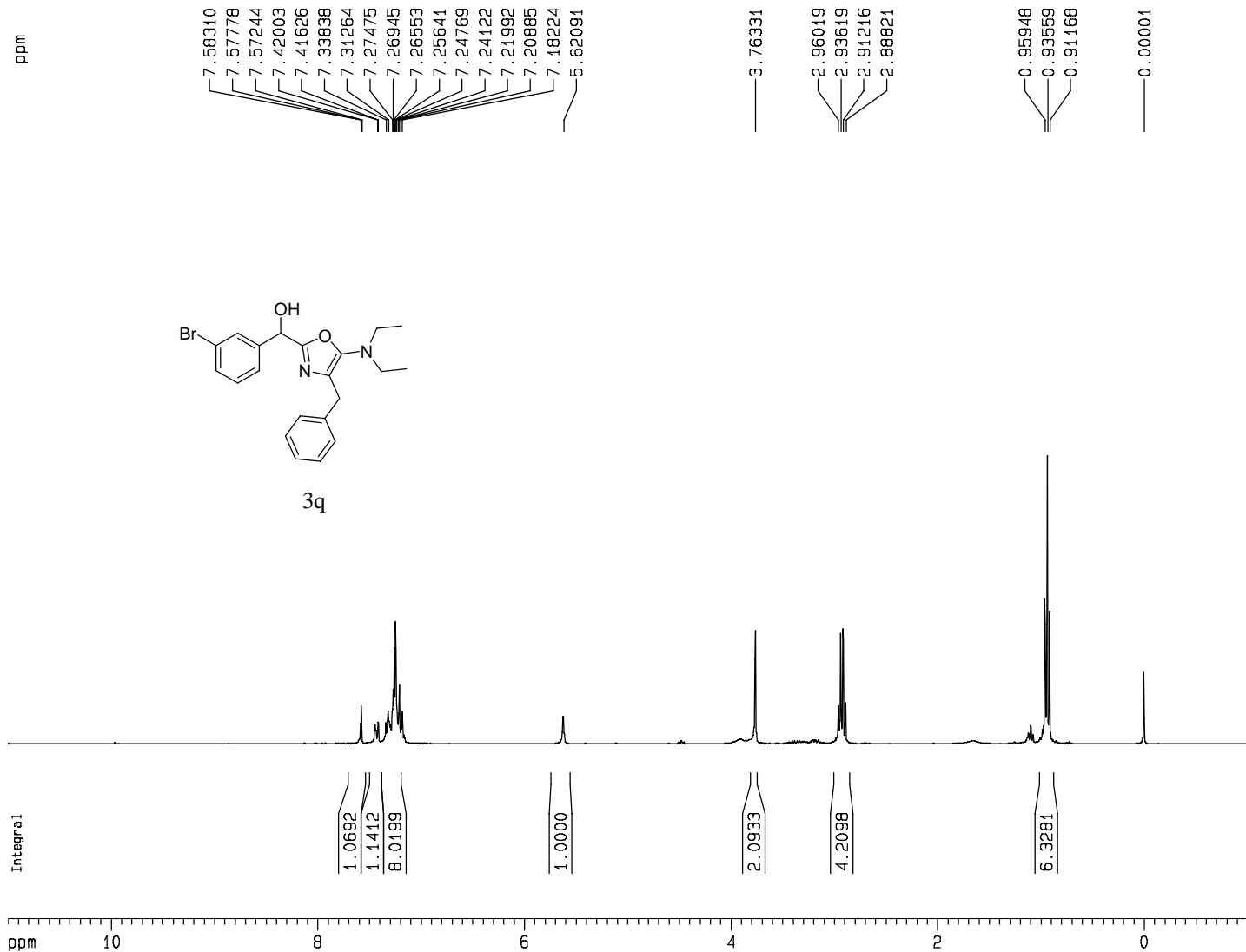
NUC1 1H
 P1 9.30 usec
 PL1 -1.00 dB
 SF01 300.1318534 MHz

F2 - Processing parameters

SI 32768
 SF 300.1300075 MHz
 WDW EM
 SSB 0
 LB 0.30 Hz
 GB 0
 PC 1.00

1D NMR plot parameters

CX 22.00 cm
 CY 8.00 cm
 F1P 11.000 ppm
 F1 3301.43 Hz
 F2P -1.000 ppm
 F2 -300.13 Hz
 PPMCM 0.54545 ppm/cm
 HZCM 163.70728 Hz/cm



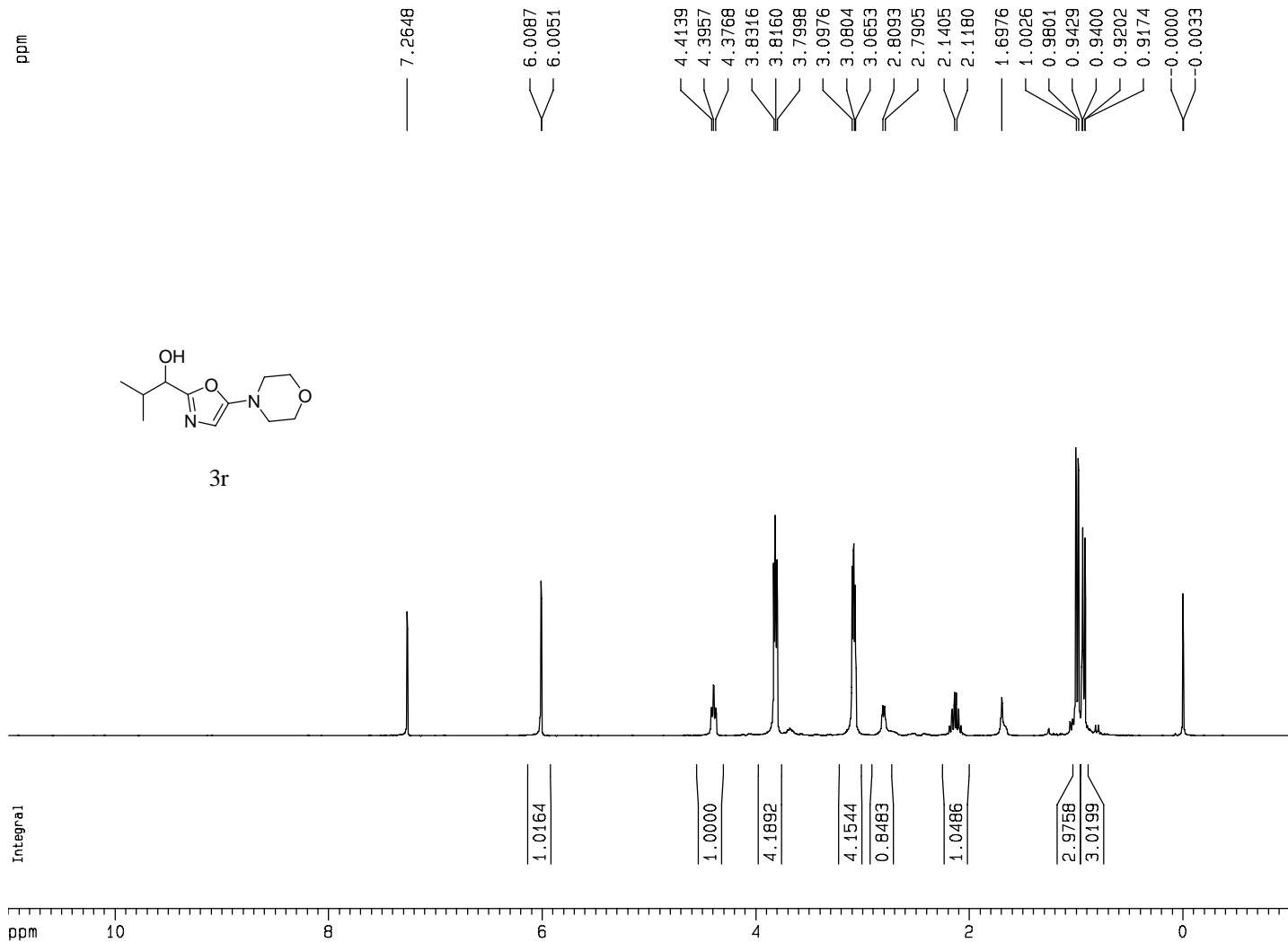
Current Data Parameters
 NAME wsx-0428-trun12
 EXPNO 10
 PROCNO 1

F2 - Acquisition Parameters
 Date_ 20060428
 Time 16.09
 INSTRUM av300
 PROBHD 5 mm DUL 13C-1
 PULPROG zg30
 TD 65536
 SOLVENT CDC13
 NS 16
 DS 2
 SWH 6172.839 Hz
 FIDRES 0.094190 Hz
 AQ 5.3084660 sec
 RG 256
 DW 81.000 usec
 DE 6.00 usec
 TE 300.0 K
 D1 2.00000000 sec

===== CHANNEL f1 =====
 NUC1 1H
 P1 9.30 usec
 PL1 -1.00 dB
 SFO1 300.1318534 MHz

F2 - Processing parameters
 SI 32768
 SF 300.1300072 MHz
 WDW EM
 SSB 0
 LB 0.30 Hz
 GB 0
 PC 1.00

1D NMR plot parameters
 CX 22.00 cm
 CY 5.00 cm
 F1P 11.000 ppm
 F1 3301.43 Hz
 F2P -1.000 ppm
 F2 -300.13 Hz
 PPMCM 0.54545 ppm/cm
 HZCM 163.70728 Hz/cm



Current Data Parameters
 NAME wsx-0430-trun21
 EXPNO 10
 PROCNO 1

F2 - Acquisition Parameters
 Date_ 20060430
 Time 8.25
 INSTRUM av300
 PROBHD 5 mm DUL 13C-1
 PULPROG zg30
 TD 65536
 SOLVENT CDC13
 NS 16
 DS 2
 SWH 6172.839 Hz
 FIDRES 0.094190 Hz
 AQ 5.3084660 sec
 RG 256
 DW 81.000 usec
 DE 6.00 usec
 TE 300.5 K
 D1 2.00000000 sec

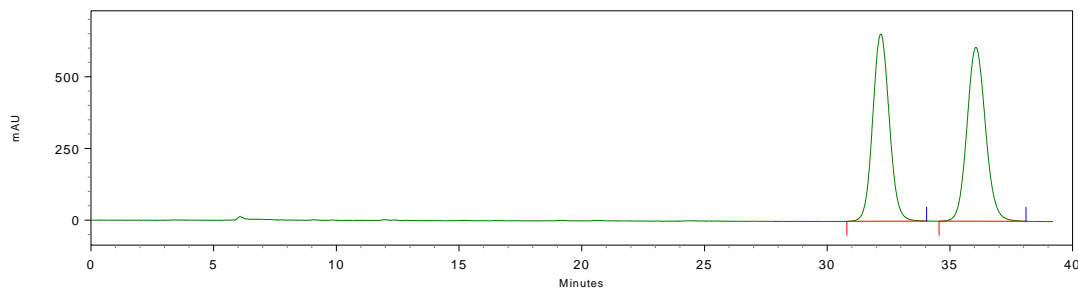
===== CHANNEL f1 =====
 NUC1 1H
 P1 9.30 usec
 PL1 -1.00 dB
 SFO1 300.1318534 MHz

F2 - Processing parameters
 SI 32768
 SF 300.1300051 MHz
 WDW EM
 SSB 0
 LB 0.30 Hz
 GB 0
 PC 1.00

1D NMR plot parameters
 CX 22.00 cm
 CY 5.00 cm
 F1P 11.000 ppm
 F1 3301.43 Hz
 F2P -1.000 ppm
 F2 -300.13 Hz
 PPMCM 0.54545 ppm/cm
 HZCM 163.70728 Hz/cm

Chiral HPLC trace of 3g

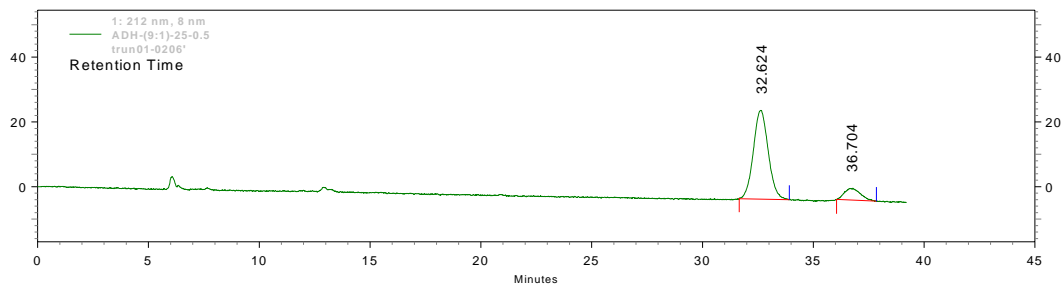
Compound	Column	Mobile phase	MI / min	T °C	t ₁ min	t ₂ min
	chiralcel					
3g	ADH	Hex:IPA 9:1	0.5	25	32.2	36.1



1: 212 nm, 8 nm

Pk #	Retention Time	Area	Area %
1	32.178	30683985	49.015
2	36.053	31916960	50.985

Totals		62600945	100.000
---------------	--	----------	---------



1: 212 nm, 8

nm

Pk #	Retention Time	Area	Area %
1	32.624	2560489	87.725
2	36.704	358293	12.275

Totals		2918782	100.000
--------	--	---------	---------