

# ADVANCED MATERIALS

**Supporting Information**

for

*Advanced Materials*, adma.200601370

© Wiley-VCH 2007  
69451 Weinheim, Germany

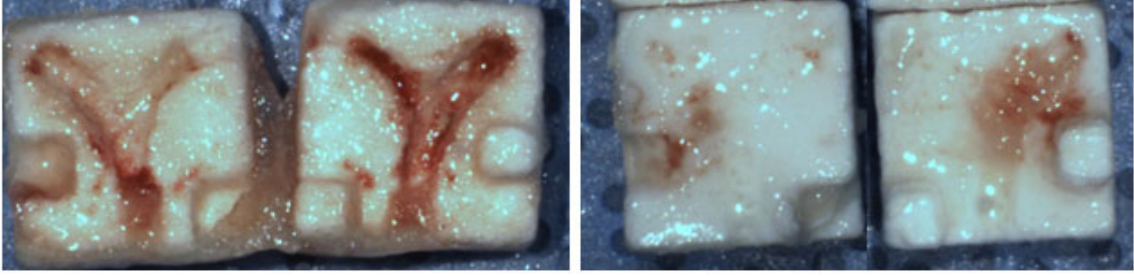
## Supporting Information

Figure 5. Vascularisation patterns in pores of DCPD (left) and HA (right) implants with 2  $\mu\text{g}$  VEGF deposited in closed pore ends opened following 15 days implantation. HA implants were mostly filled with clear connective tissue.

Figure 6, (A) Examples of complex 3D shapes made in DCPD: a disc with 32 1.5 mm diameter holes, and human skulls made by reducing the scale of CT data by a factor of 4, one skull is sectioned to show internal detail. (B) A 2D branched structure hand drawn using a computer aided design (CAD) package faithfully reproduced in a 25 x 25 x 5 mm HA cuboid as confirmed by X-ray photograph (C).

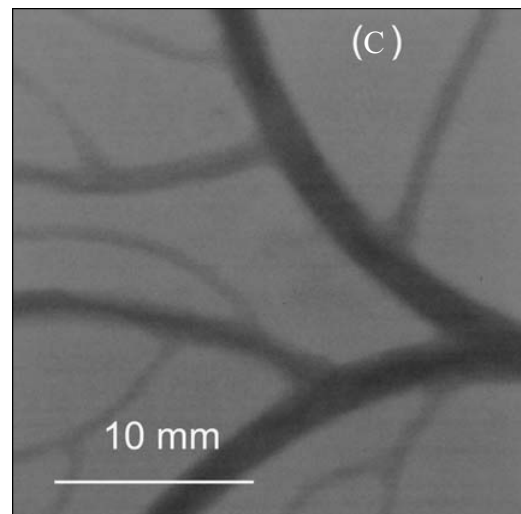
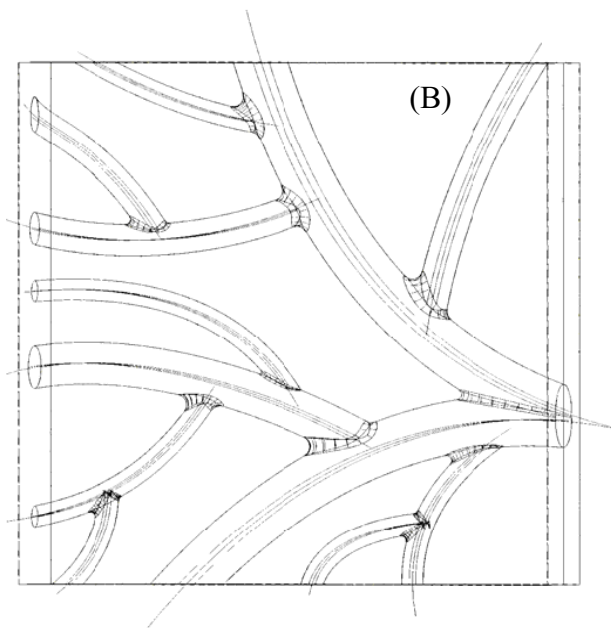
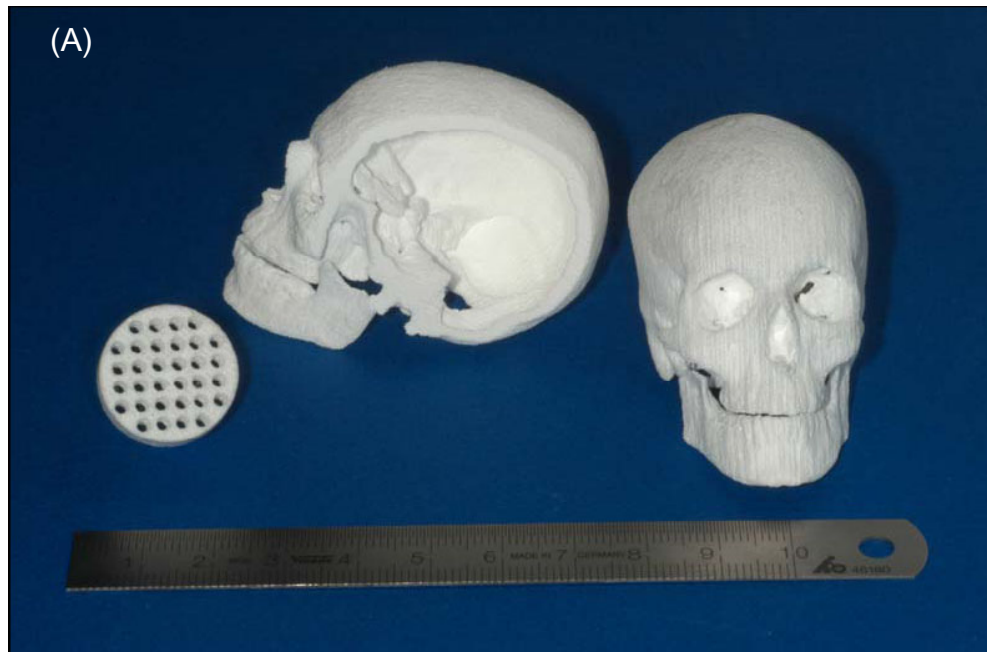
Figure 7. Gradients of serum proteins and saline on DCPD were stable *in vitro* for up to 3 weeks, plan view and cross section. Field widths: plan view 6mm, cross section 5mm. Graph shows image analysis of blue value across diameter of stained regions shown in plan view.

Figure 8. Primary antibody-free section of tissue shown in Figure 3B (iv).



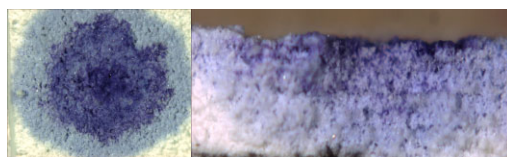
**FIGURE 5**

**FIGURE 6**

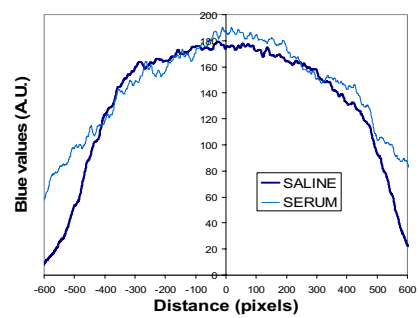


**FIGURE 7**

Serum



Saline



**FIGURE 8**

