

Phase Diagrams for Various Aluminate Spinel

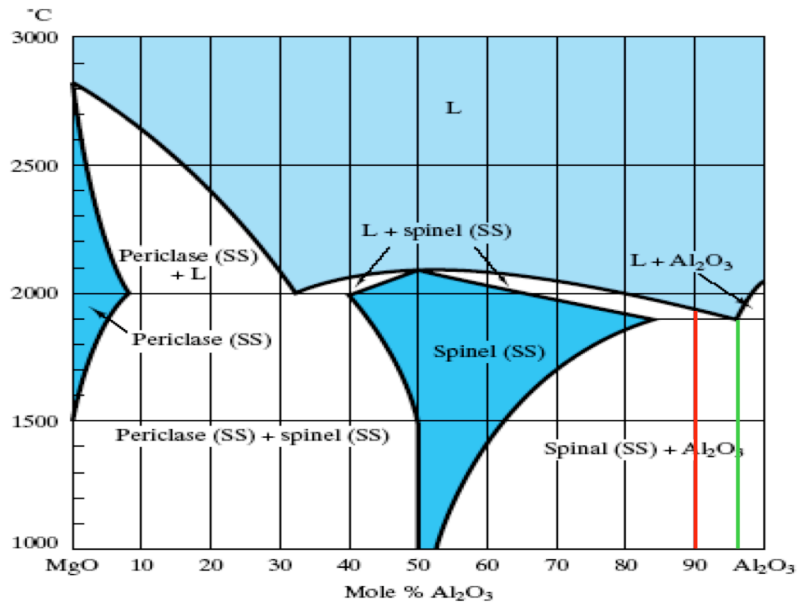


Figure 9-26 MgO-Al₂O₃ phase diagram. Spinel is an intermediate compound with ideal stoichiometry MgO · Al₂O₃. (After Phase Diagrams for Ceramists, Vol. 1, American Ceramic Society, Columbus, Ohio, 1964.)

Figure S1. MgO-Al₂O₃ phase diagram

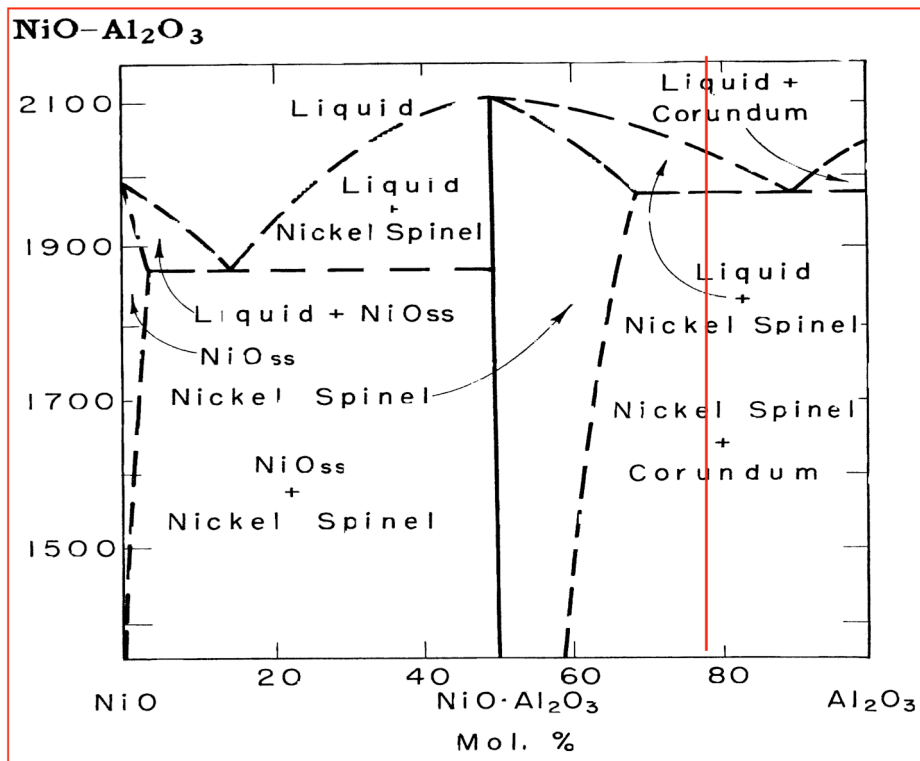


Figure S2. NiO-Al₂O₃ phase diagram

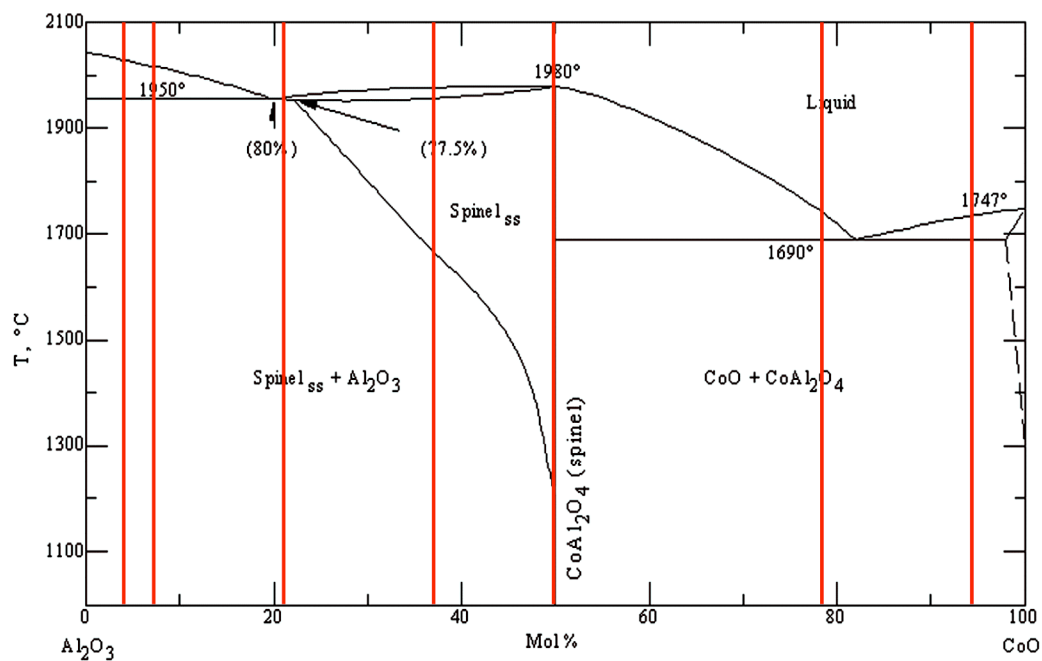


Figure S3. CoO-Al₂O₃ phase diagram

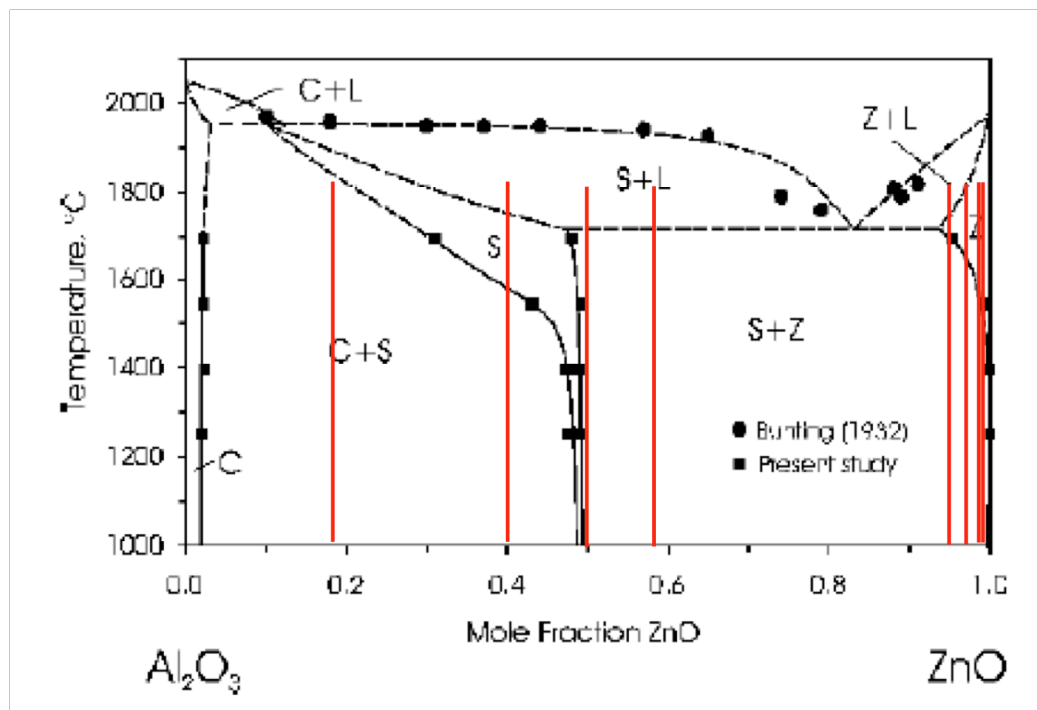


Figure S4. ZnO-Al₂O₃ phase diagram. Note that the composition shot at 0.58 ZnO is in fact 0.33 ZnO and was mislabeled on this chart.

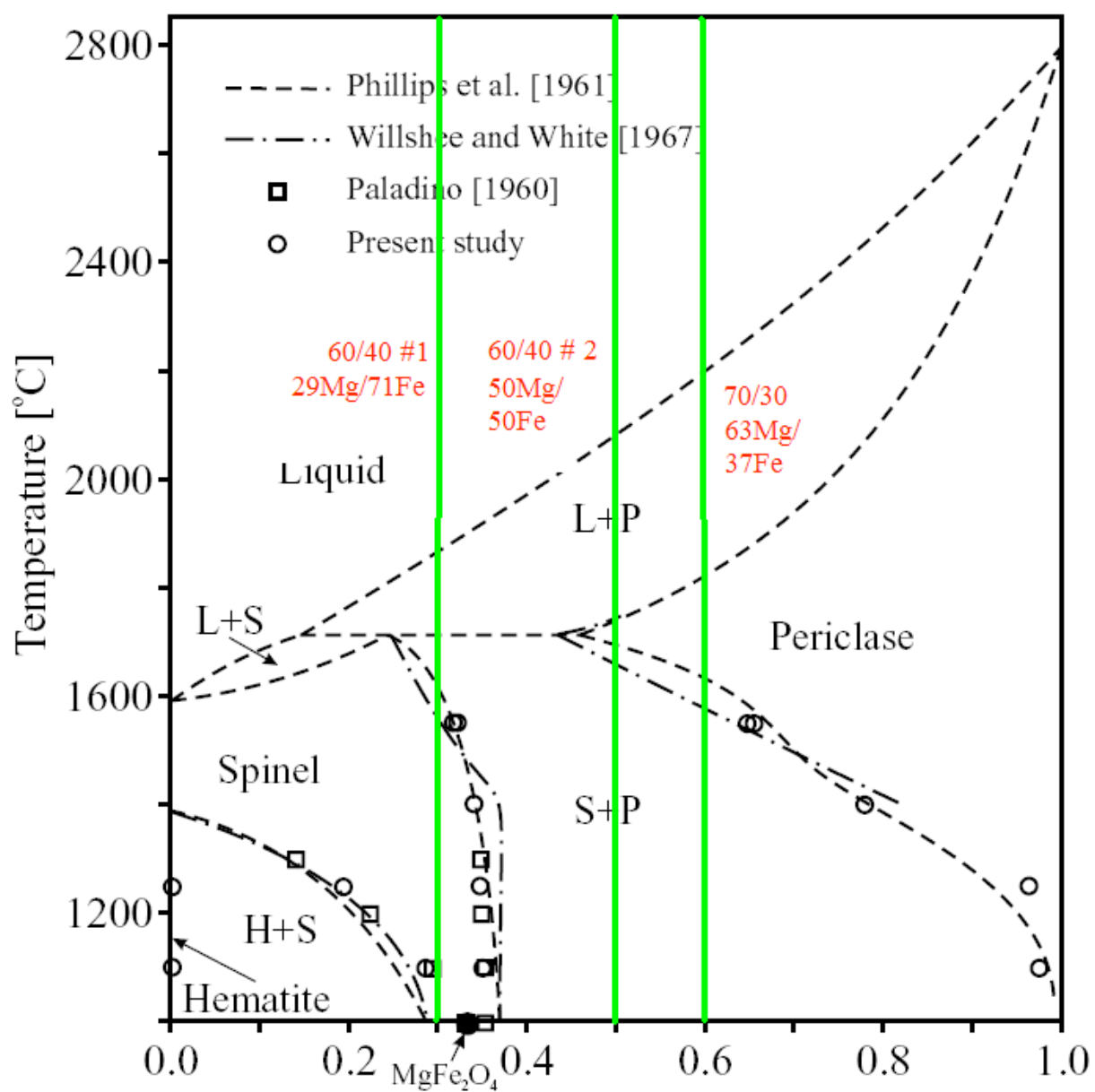


Figure S5. MgO-Fe₂O₃ phase diagram. Values in red were determined by XRF. 50:50 refers to atom fraction.