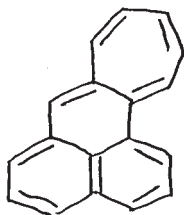


1988. 9. 17

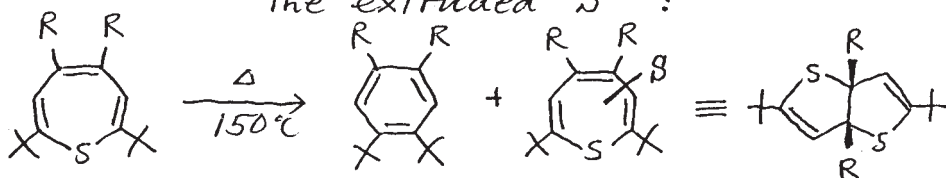


highly electron-donating  
hydrocarbon with high-lying  
HOMO

$$E_1^{ox} = 0.39 \text{ V vs. SCE}$$



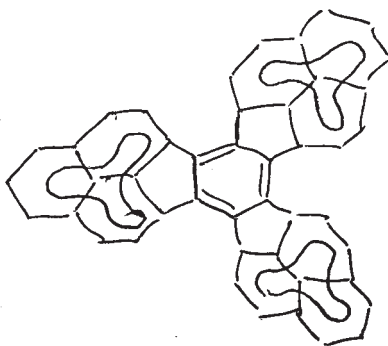
what is the final destination of  
the extruded "S"?



R = H, *t*-Bu, COOC<sub>2</sub>H<sub>5</sub>

村田 一郎

I. Murata



Structure not yet proved  
but this green substance  
has strange properties  
therefore we call  
it "Henna valene"

V. U. K.  
Kag-Uue Klabunde