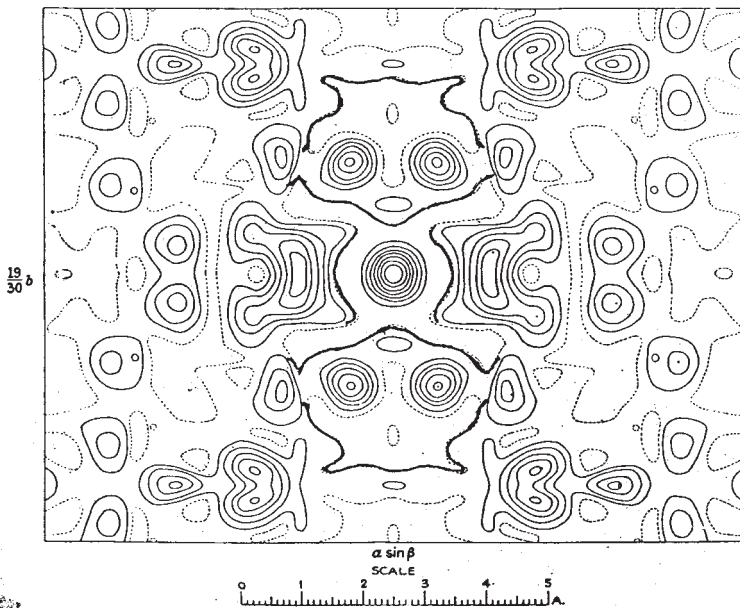


19th Sept. 1966

The "Panda Effect", first discovered in Cubic Trochilone in 1951 (J. 1951, 1222)

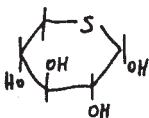
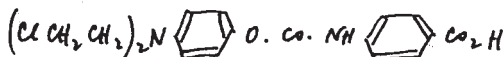
FIG. 1.

Projection along c, synthesised from (h + k)-even structure factors only. It shows the structure superimposed on its mirror image. The contour scale is arbitrary, but it is reduced by a factor of 5 on the central atom.



With best regards. J. Monteath Robertson

It is a great pleasure to meet Professor Norre once again, and an honour to join the very distinguished company in this book.



L. N. Owen
20 September 1966