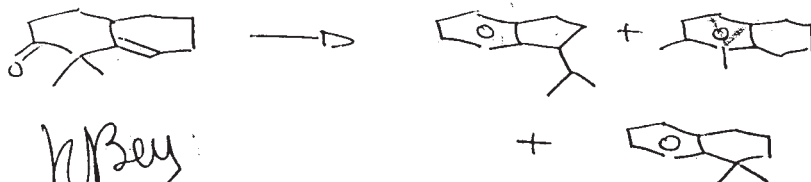


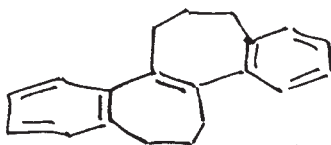
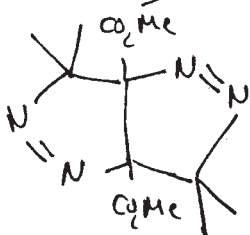
Where does the H come from?
from positions 2 and 5.

Strasbourg, 30/9/1966. R. Woelff, G. Wolff

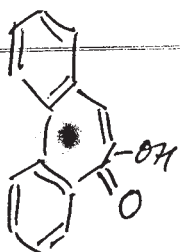


R. Bey

Michel Franck - Neumann



12/11/1966



R. Lohr, Saarbrücken (Germany)

am 30.9.66 in Strasbourg!

and one of his pupils
 \xrightarrow{LiV} ? *J. Klein*