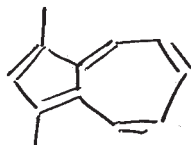
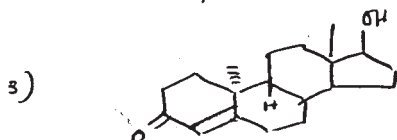


R = -CH₂-CH=CH₂ = "Alloferine"



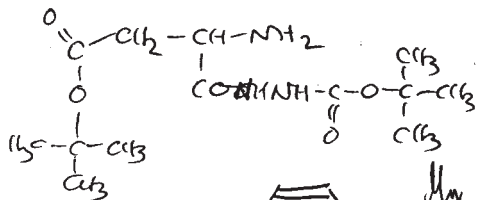
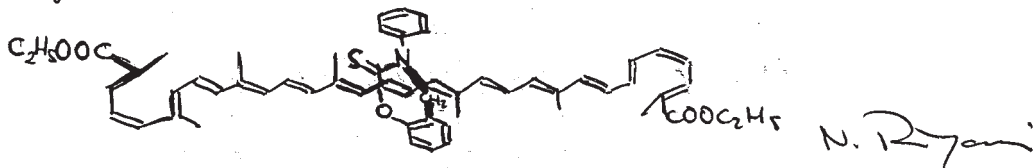
(a long time ago!)



Since our last meeting we did some work on the above mentioned problems. Next time - I hope - we will be able to show you some more formulae!

Kindest wishes
yours
A. Witt

Basle, 10.10.1966.



Marcel Scheer



My first chemical love
and as near as I ever came to a
room.
H. Kaiser 10.10.66