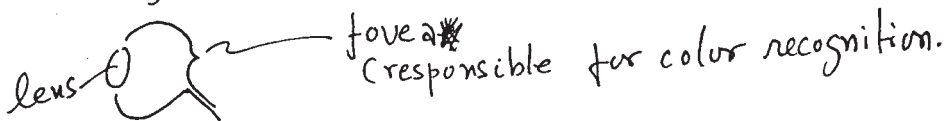


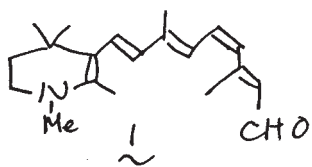
Toba. Nat. Prod. Meeting
Post IUPAC Meeting
sept. 13/1977
NAKANISHI

To Professor Nozoe
(with my most sincere gratitude)
who mistook a "bloody Mary" for an
orange juice, had a re-fill and
started to wobble like a nucleus
in an NMR magnet.

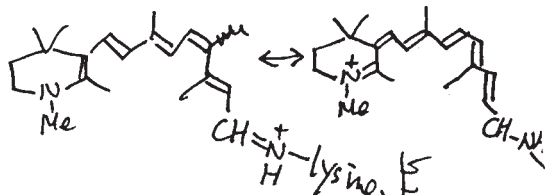
Prof. Nozoe, at this stage, was totally
red; this is because I can, in spite of my
senility, still recognize "color", which is
due to a totally non-understood phenomenon
taking place in the fovea.



We are attempting to make 1 which at
least in vitro should give ~~give~~ a rhodopsin
which has its λ_{max} in the near-IR or IR.



i.e. in the rhodopsin



How will Prof. Nozoe's
red face look when
humans have this artificial
retinal in their eyes?

would he look
purple? *Retinal*