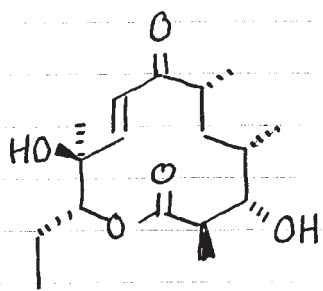


(854)



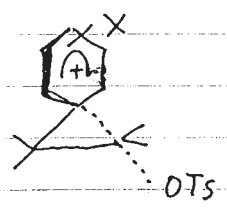
May 26, 1983

九大理部化学教室

山口 勝

Masaru Yamaguchi

$$\log k/k_0 = \rho(\sigma^0 + \gamma^+ \Delta\sigma_R^+ + \gamma^- \Delta\sigma_R^-)$$

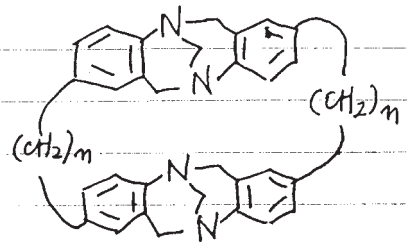


$\rho = -3.7$ ,  $\gamma = 0.6$   
(1983)

九大理

Yuko Tsuno

都野雄南



九大理学部

稻津孝彦

Takahiko Inazu